

Procedure for conduct in the event of and for reporting GMO incidents, accidents, or emergencies

Introduction

This procedure for GMO incidents, accidents, and emergencies outlines the actions that must be taken by employees, the Departmental Expert for Biosafety (ABV), the employee responsible (VM), the research leader (OL), and Biosafety Officer (BSO) in the event of an incident, accident, or emergency involving genetically modified organisms (GMO). This procedure also applies to events in contained rooms where no GMO is involved. This is because there is always a risk of release of a GMO.

The definitions for an incident, accident, and emergency are specified below.

Definitions

Incident

An unexpected, unscheduled, and undesirable event that involves an elevated risk of the release of GMOs within the GMO workspace. The event carries a risk of employee contamination but without negative consequences for health. For example: A GMO spillage on the workbench or on the floor that is larger than what can be cleaned with a tissue.

Accident

An unexpected, unscheduled, and undesirable event that leads to employee or third-party injury, wound, or contamination with potentially pathogenic microorganisms, which could have a negative consequence for the employee. This could include a puncture incident involving a GMO.

Emergency

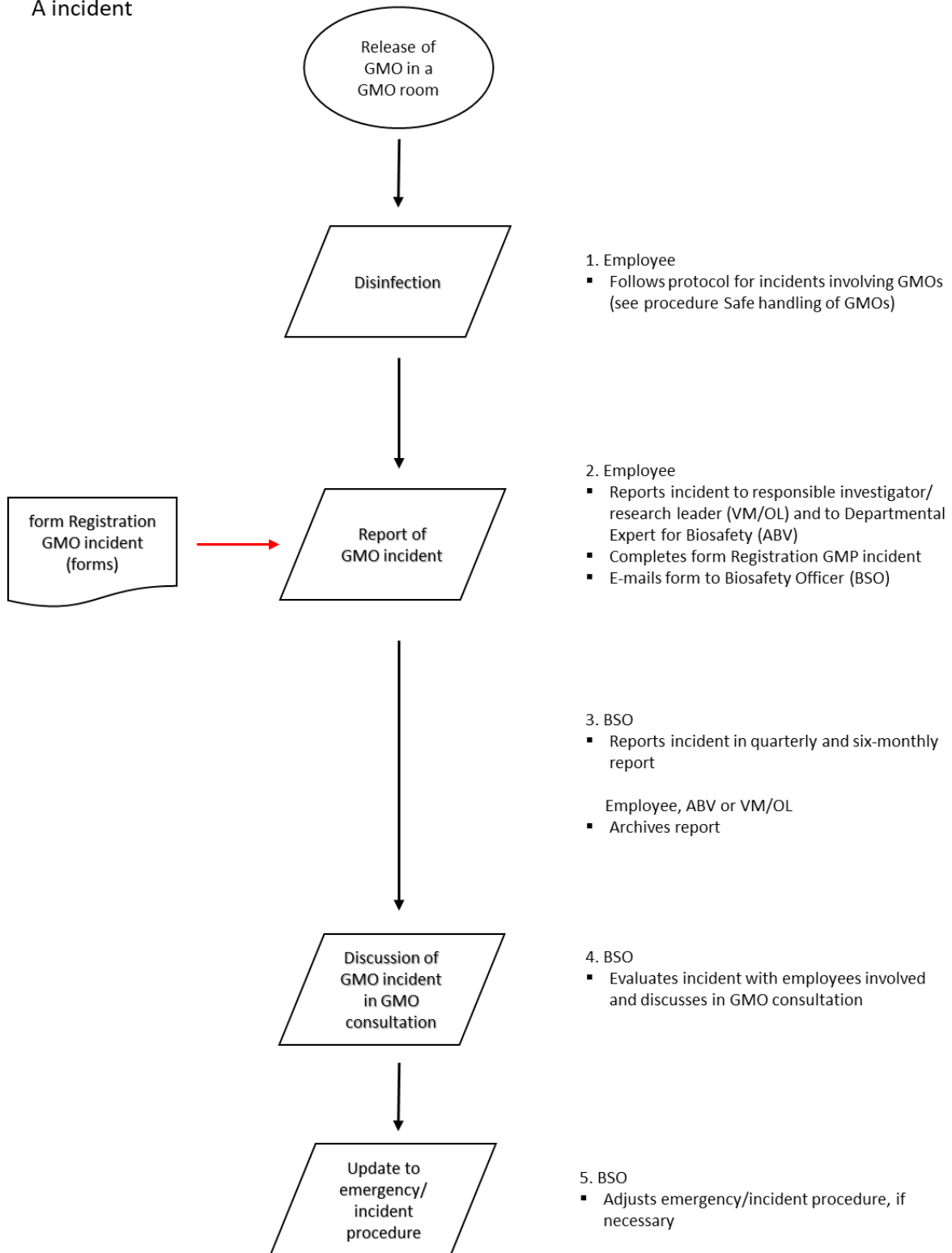
An unexpected, unscheduled, and undesirable event resulting in:

- Major contamination of the room or equipment, and/or
- GMOs that have escaped the GMO workspace (workspace for contained use). This could include an explosion, fire, flooding, or discharge of the GMO into the sewer.

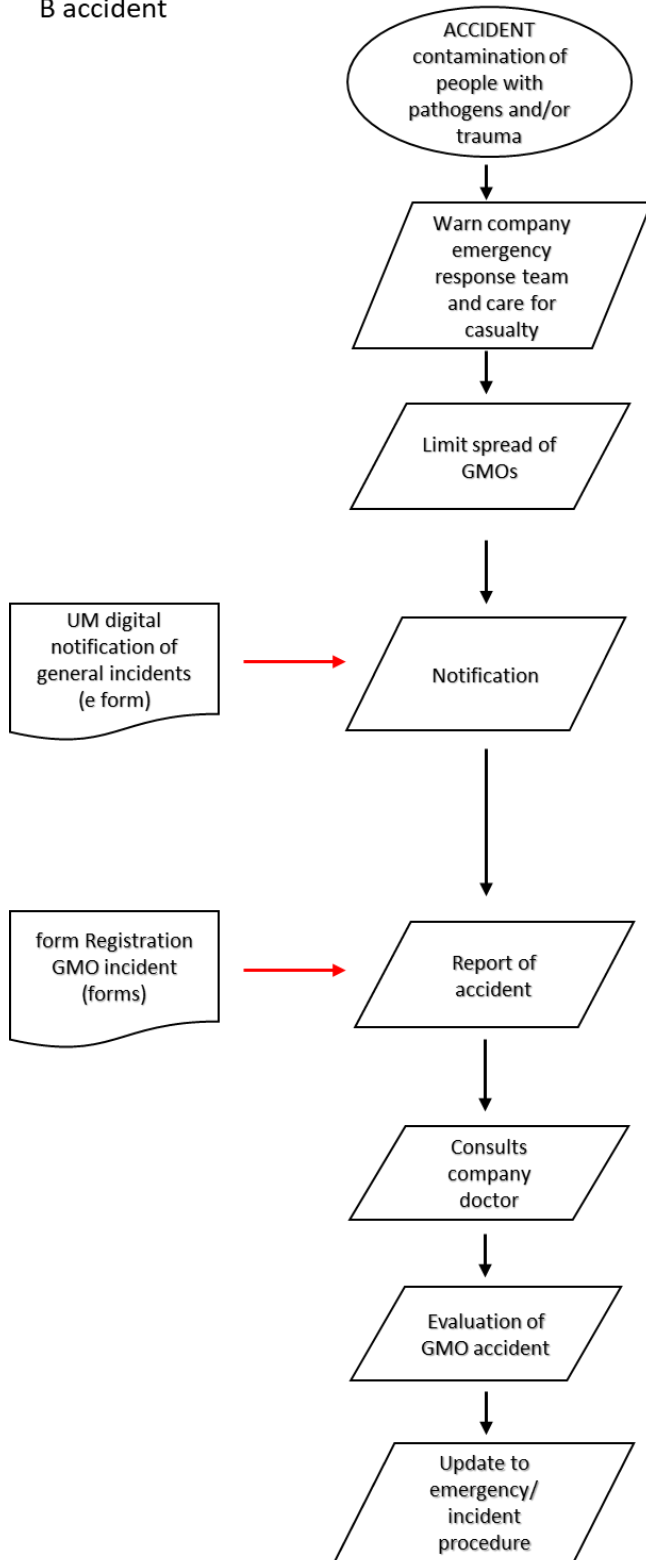
Procedure

The following flowcharts show the procedure that must be followed in the event of an incident (A), accident (B), or emergency (C).

A incident



B accident



1. Employee
 - In the event of trauma, call 1333 (UM), 1000 (MUMC+), or +31(0) 433875566 (mobile)
 - Report location (room number), nature of trauma, and ask company emergency response team to be called
 - Reassure casualty
 - Think of your own safety and that of casualty; remove casualty from danger zone, if necessary
 - Follow protocol for incidents involving GMOs (see Procedure for working safely with GMOs)
 - In the event of a puncture accident, follow procedure for puncture accidents

2. Employee
 - Take measures to prevent spread of GMOs and disinfect contaminated areas

3. Employee
 - Informs responsible investigator/ research leader (VM/OL) and Departmental Expert for Biosafety (ABV)

BSO

- Notifies ILenT in the event of serious risks for people or the environment
- In the event of an occupational accident, BSO completes designated e-form to notify head of occupational health and safety of accident

4. VM/OL or ABV
 - Completes form Registration GMO incident
 - E-mails form to BSO

Head of occupational health and safety

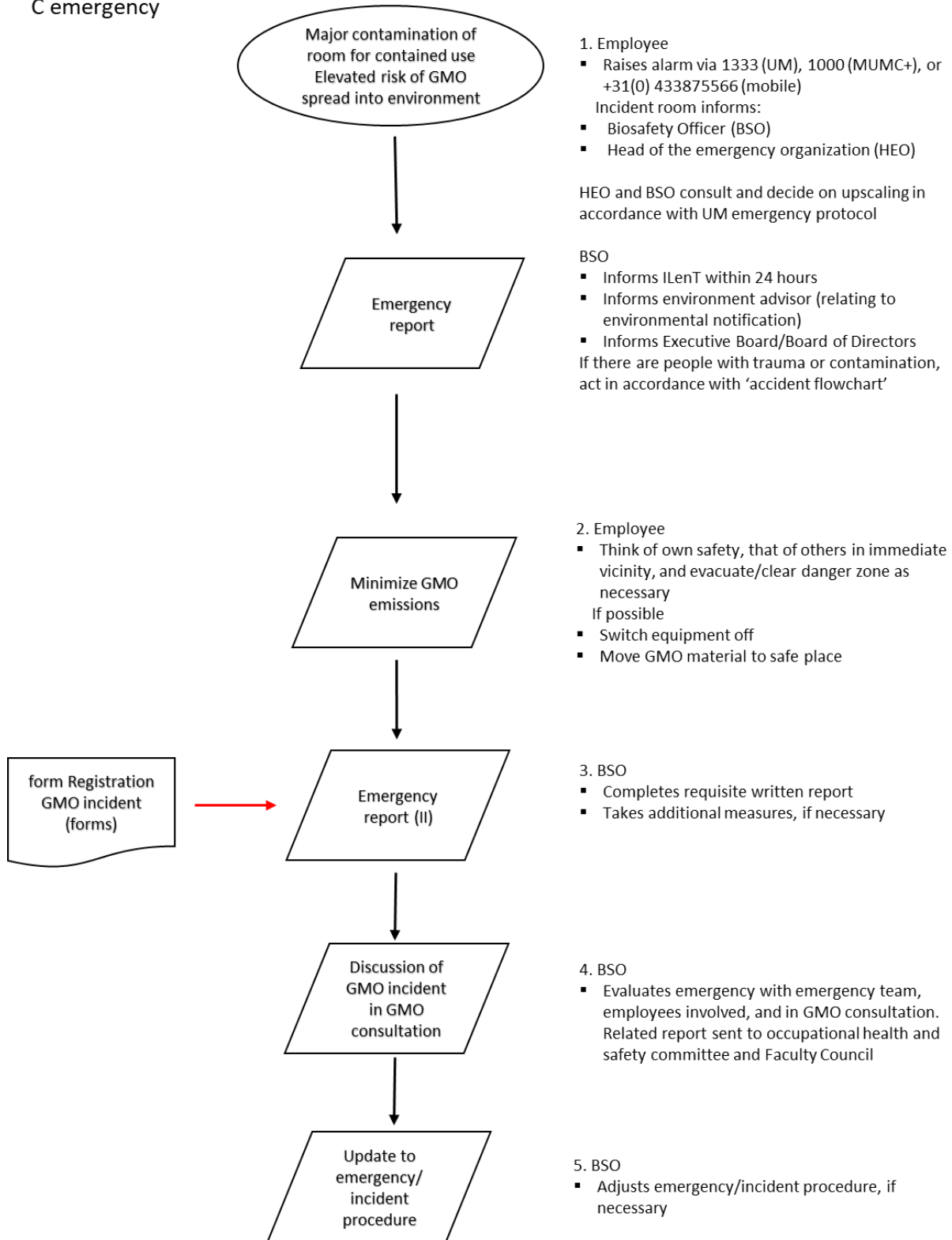
- Records accident in company register
- Notifies labour inspectorate and, if necessary, Faculty Council of incident
- Notifies company doctor of accident

5. Employee(s) with trauma or contamination
 - Consult company doctor (on basis of accident report)

6. BSO
 - Evaluate accident with head of the emergency organization (HEO), employees involved, then in GMO consultation

7. BSO
 - Adjusts emergency/incident procedure, if necessary

C emergency



Incident reporting criteria

Unexpected, unscheduled, and undesirable events involving GMOs in contained use that could lead to an elevated risk to people or the environment must be reported, by the BSO, to the Human Environment and Transport Inspectorate.

For contained use, four categories of incident involving GMOs can be distinguished:

A. Escape of the GMO from the primary physical containment without elevated risk of the barrier of the contained room being breached (i.e. small-scale contamination in the workspace that can be cleaned up easily).

B. Escape of the GMO from the primary physical containment where there is an elevated risk of the barrier of the contained room being breached (e.g. contamination within the workspace that is difficult to control).

C. Elevated risk of or actual breach of the barrier of the contained room (e.g. fire in or near the workspace).

D. Actual release of genetically modified organisms into the environment (e.g. discharge into the sewer).

Category	Type	Containment level	Internal notification to BSO	Notify ILT/IenW
A	Small-scale contamination	I, II, III and IV	x	
B	Contamination that is difficult to control	I and II	x	
C	Contamination that is difficult to control	III and IV	x	x
D	Potential breach of room barrier	I, II, III and IV	x	x
E	Release of GMO into environment	I, II, III and IV	x	x

Forms required

Incidents, accidents, and emergencies must always be reported to the BSO using the form [Registration gmo incident](#).

A digital report must also be sent to the head of occupational health and safety using the digital report point in the event of all accidents and emergencies within UM: [Reporting incidents](#).

For the MUMC+ an Odin notification must be made via [Zenya](#).

Afkortingenlijst

ABV	Departmental Expert for Biosafety
Arbo-cie	UM occupational health and safety committee
azM	Academisch Ziekenhuis Maastricht
BHV	Company emergency response team
BSO	Biosafety Officer
EB/BoD	Executive Board/Board of Directors
F-raad	Faculty Council
GMO	Genetically Modified Organism
HCO	Head of the emergency organization
IenW	Ministry of Infrastructure and Water Management; executive body: Bureau GGO
ILenT	Human Environment and Transport Inspectorate
MUMC+	Maastricht University Medical Centre+
OL	Research leader
UM	Maastricht University
VM	Responsible Investigator

References

- Decree and Regulation on Genetically Modified Organisms, Environmental Management 2013, IenW April 2014
- [Website HSBM Maastricht](#)

Further information

For further information, please contact the [BSO](#).