



# Welcome to Maastricht University

**School of Business and Economics**

Pre-Master's Introduction Day

# Outline of the Day

<b>10.00-11.00</b>	Opening Lecture
<b>11.00-11.30</b>	Icebreaker & get to know your buddy and group
<b>11.30-12.30</b>	Important information by buddy
<b>12.30-13.15</b>	Lunch
<b>13.15-13.45</b>	The "Are you okay?" lecture
<b>13.45-16.00</b>	Rotation schedule

## Wednesday 31 January

<b>11.00-12.30</b>	"Problem Based Learning, the concept"
--------------------	---------------------------------------

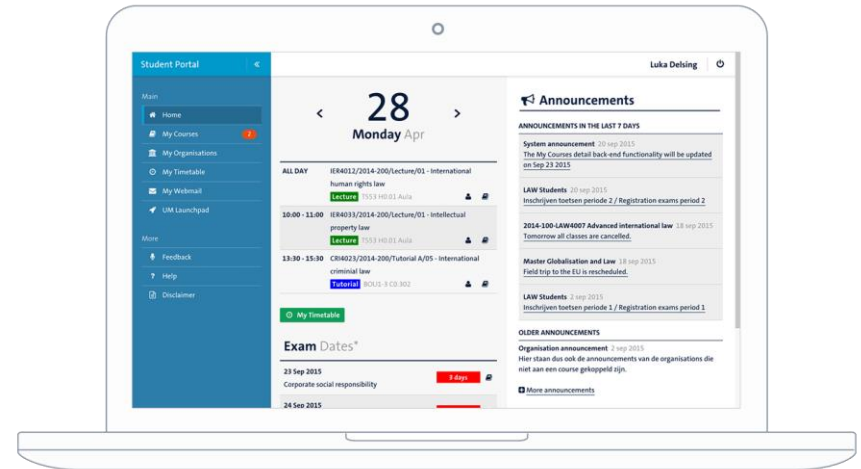
# Student Portal

Your one-stop location for accessing and managing your personal university information.

For accessing your **course material**, answering your **e-mail** and browsing your **timetable**, managing your **course registrations**, and checking your **grades**.

To the Student Portal  
[studentportal.maastrichtuniversity.nl](http://studentportal.maastrichtuniversity.nl)

Instruction video Student Portal  
[um-sbe.com/instructions-student-portal](http://um-sbe.com/instructions-student-portal)



# Canvas

**Your learning management system (LMS) for support on teaching and learning activities.**

This means that if you click on your courses in the Student Portal, you will be redirected to the Canvas LMS. You can use Canvas to access all materials, articles, assignments and messages for your courses.

## To Canvas

[studentportal.maastrichtuniversity.nl](https://studentportal.maastrichtuniversity.nl) > My Courses

## Instruction video Canvas

[um-sbe.com/instruction-canvas](https://um-sbe.com/instruction-canvas)

## Canvas Student App

[um-sbe.com/canvas-app](https://um-sbe.com/canvas-app)



## Course and exam registration

**You will be registered for all your courses and first-sit exams by SBE**

- Check the outline of your study programme via [sbeosp.maastrichtuniversity.nl](https://sbeosp.maastrichtuniversity.nl)
- Your Timetable is visible via the Student Portal > My Timetable
- If you are not registered for courses in Period 4, please contact the SBE Education and Exams Office via Ask SBE ([www.asksbe.nl](https://www.asksbe.nl))

## Important tips

- ✓ Study related questions? First check the **Intranet**:  
[intranet.maastrichtuniversity.nl/en/school-business-and-economics-students](https://intranet.maastrichtuniversity.nl/en/school-business-and-economics-students) or via Student Portal > MyLinks > MySBE
- ✓ If you cannot find it on intranet, go to Ask SBE: [www.asksbe.nl](http://www.asksbe.nl)
- ✓ During opening hours, you can also go to the Information Desk at Tongersestraat 53 (main building SBE)





**Books** can be bought via  
**WO4YOU** (online)

[www.wo4you.nl](http://www.wo4you.nl)



Details on how to  
pick-up your **UM card**  
will be sent to your  
UM mail



# Printing, copying & scanning

- Multiple ways to print:
  - **Print portal** - [print.maastrichtuniversity.nl](https://print.maastrichtuniversity.nl)
  - **Campus Print app** for iOS and Android
  - **UM\_Printer** on Student Desktop (Anywhere) or install the UM Internet Printer on your own device
- Print jobs can be collected at **any** printer ("follow you queue")
- Pay with your **UMcard**
- Scans are free of charge
- Visit the **Canon shops** for custom printing and supplies (@Inner City Library and Randwyck Library)





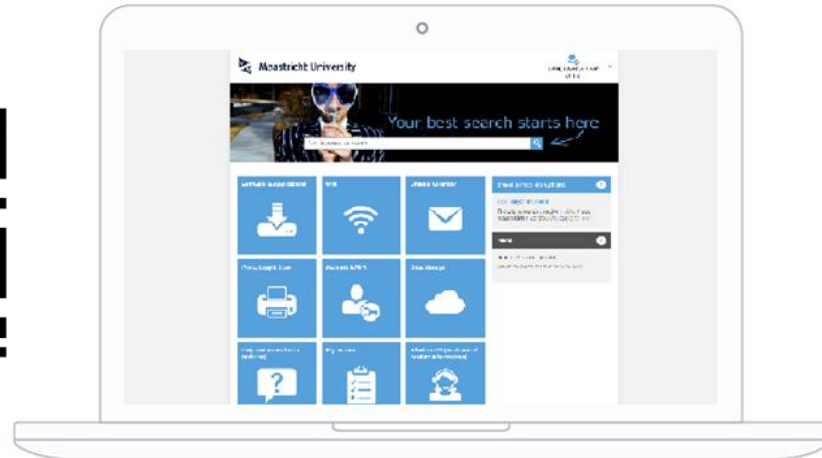
# IT support by ICTS

## Do you want to...

- ✓ Know how to connect your UM email to your personal email?
- ✓ Link your Timetable to your online calendar app on your phone or laptop?
- ✓ Download software like Office 365 or SPSS for free?
- ✓ Know how to connect to the WiFi?
- ✓ Know how to storage your data?
- ✓ Reach out for IT support?

Go to the ICTS Self-Service Portal

[servicedesk.icts.maastrichtuniversity.nl](https://servicedesk.icts.maastrichtuniversity.nl)



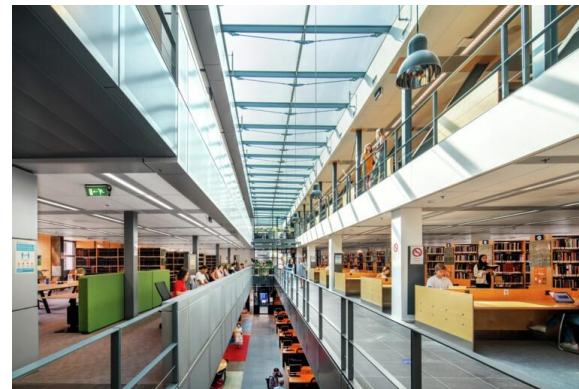
# UM Library

## Getting acquainted with the Library

- > 3000 study places
- 6 locations
  - Inner City Library
  - Randwyck Library
  - Tapijn 11 + Tapijn Loods V
  - University Sports Centre
  - Paul-Henri Spaaklaan

**Reserve your study place**  
[umlib.nl/studyplace-reservation](https://umlib.nl/studyplace-reservation)

**More information**  
[umlib.nl/newstudents](https://umlib.nl/newstudents)



## SBE Student & Career Counselling



Eva Ipektzidou



Anja Schoumackers



Joey Mak



Kontessa Legaki



Bob Joormann



Erik Kikas

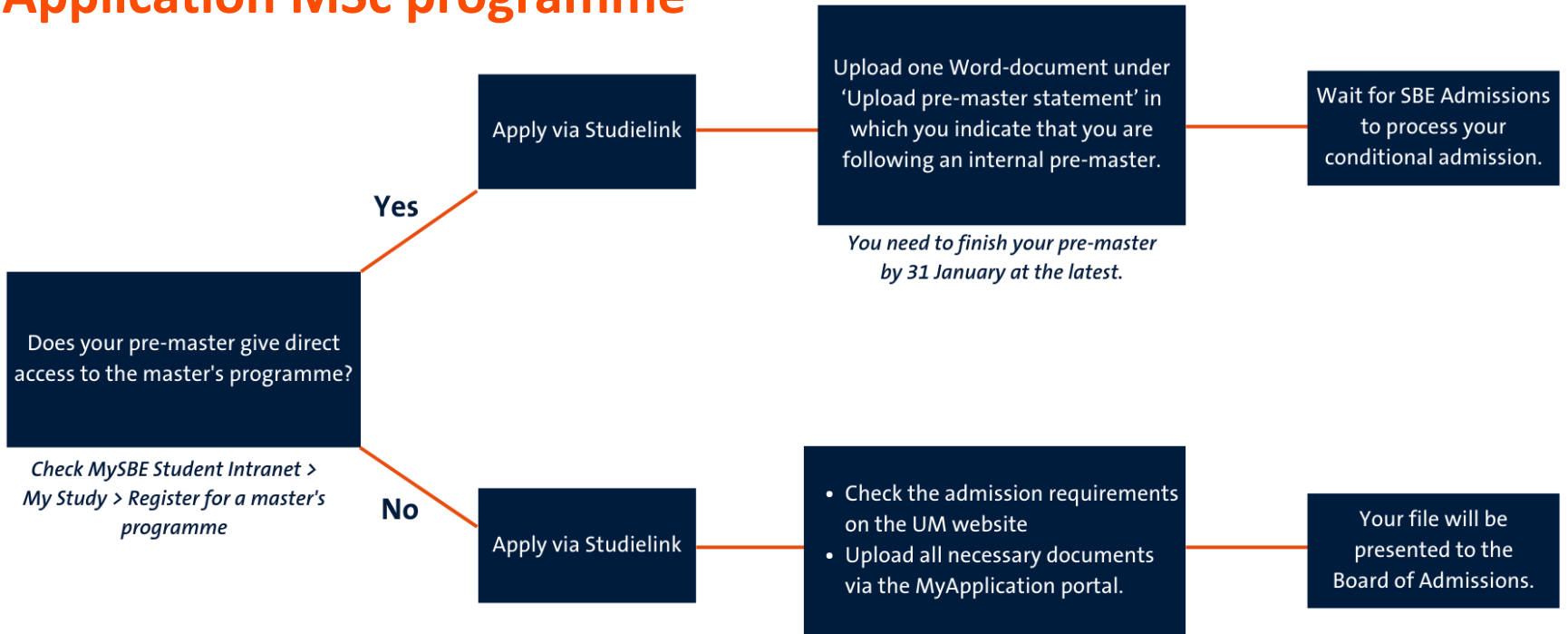


### Make an appointment

- Scan **QR code**, or
- Go to *SBE Student Intranet > Advice, Support & Counselling > SBE Student & Career Counselling*

Email: [studentadvising-sbe@maastrichtuniversity.nl](mailto:studentadvising-sbe@maastrichtuniversity.nl)

# Application MSc programme



**Questions?** Go to Ask SBE ([www.asksbe.nl](http://www.asksbe.nl))

# Questions about your registration at UM?

For example about the payment of tuition fees, uploading a diploma or copy of your passport, or picking up your UM card?

Visit the Student Service Centre  
[study@maastrichtuniversity.nl](mailto:study@maastrichtuniversity.nl)  
Bonnefantenstraat 2



## Join our online communities

Join us on **social media** to stay updated and connected!



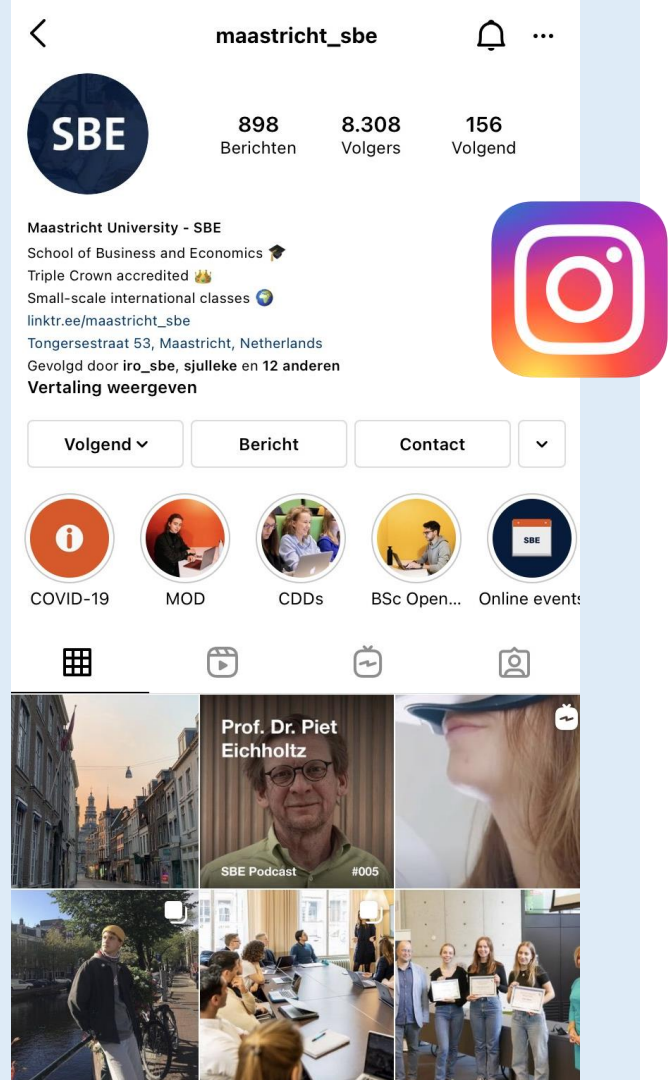
@maastricht\_sbe



Maastricht University School of Business and Economics



School of Business and Economics



# Didn't catch everything?



**Download this presentation**  
[um-sbe.com/intro-pre-master](https://um-sbe.com/intro-pre-master)



**Check your UM e-mail**  
In the following weeks, we will share important information, as well as tips and tricks, to offer you a smooth start at SBE!

**Please fill in  
the surey!**





**Do you have any questions?**

