



Welcome to Maastricht University

School of Business and Economics

Master's Introduction Day

Outline of the Day

10.00-11.00	Opening Lecture
11.00-11.30	Icebreaker & get to know your buddy and group
11.30-12.30	Important information by buddy
12.30-13.15	Lunch
13.15-13.45	The 'Are you okay?' lecture
13.45-16.00	Rotation schedule

Thursday 1 February

12.00-12.45	Introduction to PBL (online)
--------------------	------------------------------

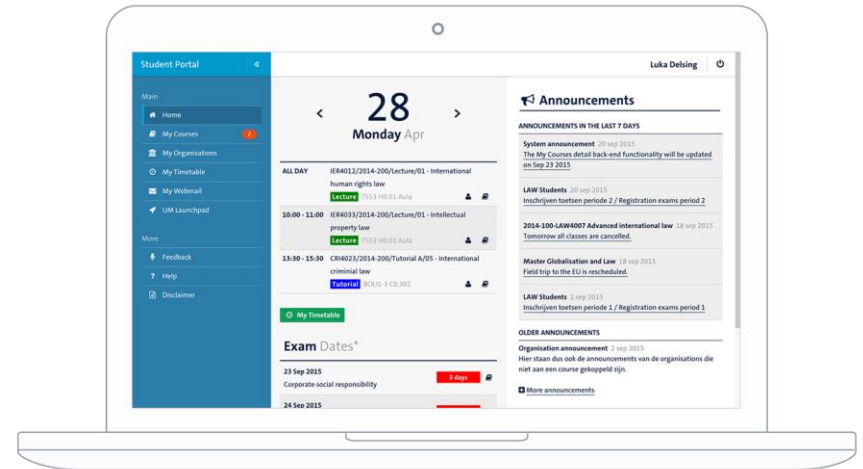
Student Portal

Your one-stop location for accessing and managing your personal university information.

For accessing your **course material**, answering your **e-mail** and browsing your **timetable**, managing your **course registrations**, and checking your **grades**.

To the Student Portal
studentportal.maastrichtuniversity.nl

Instruction video Student Portal
um-sbe.com/instructions-student-portal



Canvas

Your learning management system (LMS) for support on teaching and learning activities.

This means that if you click on your courses in the Student Portal, you will be redirected to the Canvas LMS. You can use Canvas to access all materials, articles, assignments and messages for your courses.

To Canvas

studentportal.maastrichtuniversity.nl > My Courses

Instruction video Canvas

um-sbe.com/instruction-canvas

Canvas Student App

um-sbe.com/canvas-app



Course and exam registration

You will be registered for your courses and first-sit exams by SBE in period 4. From period 5 onwards, you will need to register yourself via the Student Portal.

Deadline course registration period 5: 25 February 2024

- Check the outline of your study programme via sbeosp.maastrichtuniversity.nl
- Your Timetable is visible via the Student Portal > My Timetable
- If you are not registered for courses in Period 4, please contact the SBE Education and Exams Office via Ask SBE (www.asksbe.nl)

Important tips

- ✓ Study related questions? First check the **Intranet**:
intranet.maastrichtuniversity.nl/en/school-business-and-economics-students (or via Student Portal > MyLinks > MySBE)
- ✓ If you cannot find it on intranet, go to Ask SBE: www.asksbe.nl
- ✓ During opening hours, you can also visit the Information Desk at Tongersestraat 53 (main SBE building)





Books can be bought via
WO4YOU (online)

www.wo4you.nl



Details on how to
pick-up your **UM card**
will be sent to your
UM mail



Printing, copying & scanning

- Multiple ways to print:
 - **Print portal** - print.maastrichtuniversity.nl
 - **Campus Print app** for iOS and Android
 - **UM_Printer** on Student Desktop (Anywhere) or install the UM Internet Printer on your own device
- Print jobs can be collected at **any** printer ("follow you queue")
- Pay with your **UMcard**
- Scans are free of charge
- Visit the **Canon shops** for custom printing and supplies (@Inner City Library and Randwyck Library)



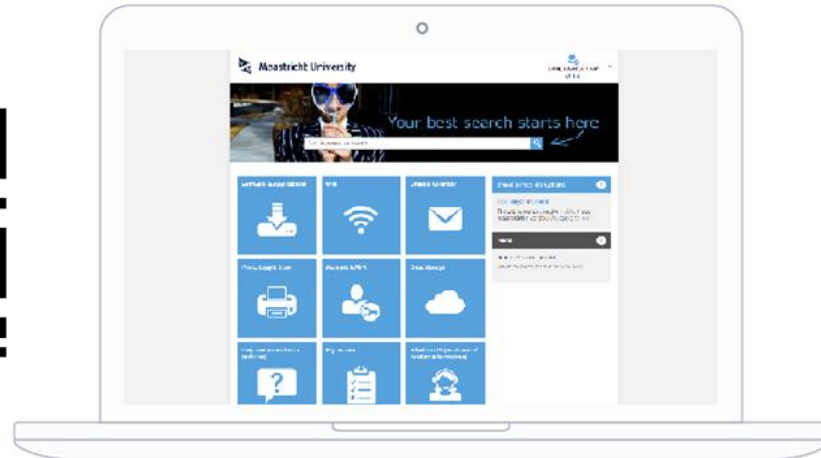
IT support by ICTS

Do you want to...

- ✓ Know how to connect your UM email to your personal email?
- ✓ Link your Timetable to your online calendar app on your phone or laptop?
- ✓ Download software like Office 365 or SPSS for free?
- ✓ Know how to connect to the WiFi?
- ✓ Know how to storage your data?
- ✓ Reach out for IT support?

Go to the ICTS Self-Service Portal

servicedesk.icts.maastrichtuniversity.nl



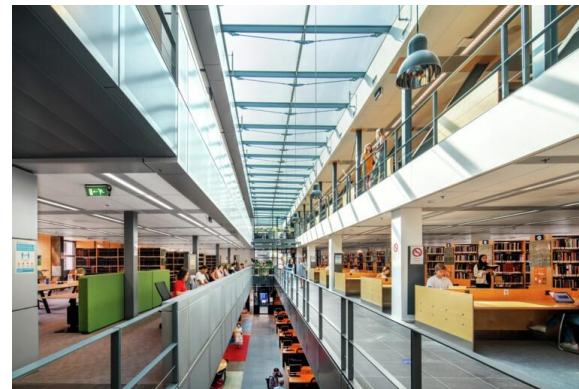
UM Library

Getting acquainted with the Library

- > 3000 study places
- 6 locations
 - Inner City Library
 - Randwyck Library
 - Tapijn 11 + Tapijn Loods V
 - University Sports Centre
 - Paul-Henri Spaaklaan

Reserve your study place
umlib.nl/studyplace-reservation

More information
umlib.nl/newstudents



Questions about your registration at UM?

For example about the payment of tuition fees, uploading a diploma or copy of your passport, or picking up your UM card?

Visit the Student Service Centre
study@maastrichtuniversity.nl
Bonnefantenstraat 2



SBE Student & Career Counselling



Eva Ipektzidou



Anja Schoumackers



Joey Mak



Kontessa Legaki



Bob Joormann



Erik Kikas



Make an appointment

- Scan **QR code**, or
- Go to *SBE Student Intranet > Advice, Support & Counselling > SBE Student & Career Counselling*

Email: studentadvising-sbe@maastrichtuniversity.nl

Join our online communities

Join us on **social media** to stay updated and connected!



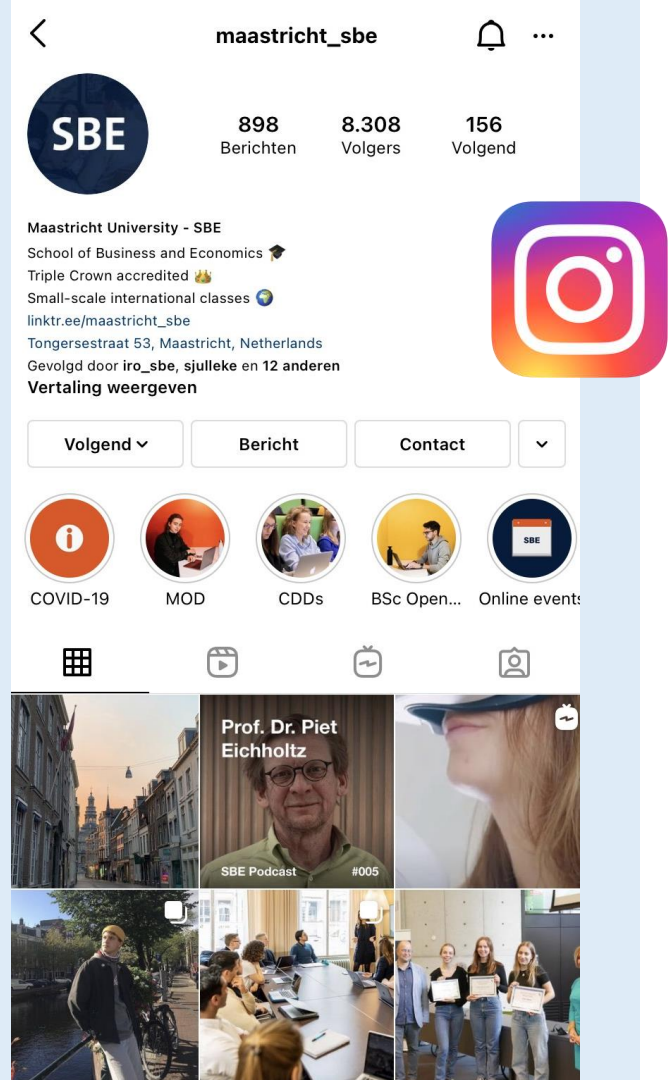
@maastricht_sbe



Maastricht University School of Business and Economics



School of Business and Economics



Didn't catch everything?



Download this presentation

um-sbe.com/intro-msc



Check your UM e-mail

In the following weeks, we will share important information, as well as tips and tricks, to offer you a smooth start at SBE!

Please fill in
the surey!



Do you have any questions?

