



Welcome to Maastricht University

School of Business and Economics

Bachelor's Introduction Day

Outline of the Day

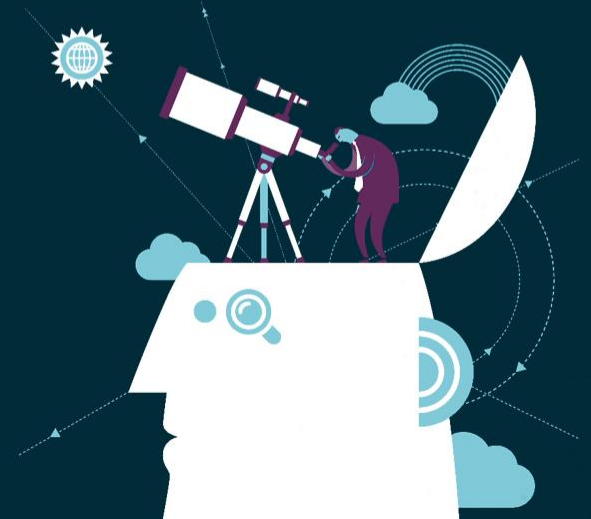
10.00-11.00	Opening Lecture
11.00-11.30	Icebreaker & get to know your buddy and group
11.30-12.15	Lunch at SBE Garden
12.15-12.45	The “Are you okay?” lecture
12.45-13.45	Important information by buddy
13.45-16.00	Rotation schedule
16.00-...	Drinks by SCOPE



Your community group

- Same group as today's group incl. the same or a new mentor (experienced SBE student)
- Mentors are here to help you to find your way around SBE and the city of Maastricht. Feel free to ask all your questions regarding studies and personal matters.
- As a community member you not only benefit from your mentor's support, but also from the other community members – you all go through this together!

SBE Community Programme



Join the Community WhatsApp group!

- Please join the WhatsApp group via the QR code shared by your buddy
- Your mentor is already part of the WhatsApp group – will introduce themselves later today!
- Get information quick & easy way to ask questions!

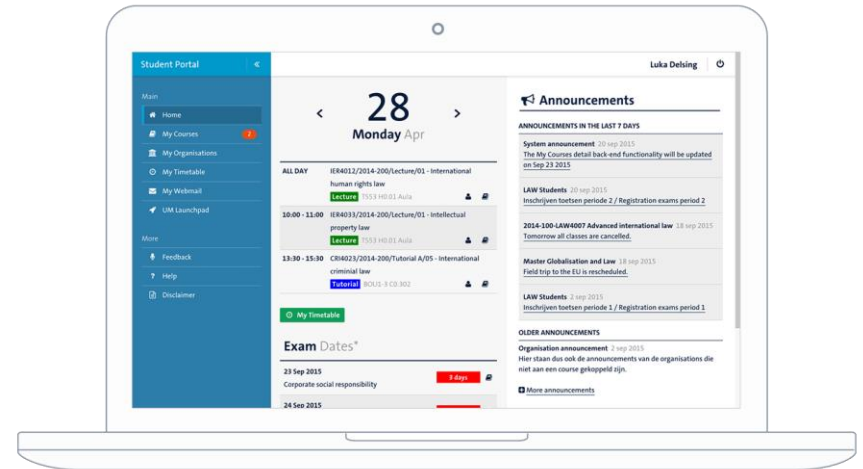
Student Portal

Your one-stop location for accessing and managing your personal university information.

For accessing your **course material**, answering your **e-mail** and browsing your **timetable**, managing your **course registrations**, and checking your **grades**.

To the Student Portal
studentportal.maastrichtuniversity.nl

Instruction video Student Portal
um-sbe.com/instructions-student-portal



Canvas

Your learning management system (LMS) for support on teaching and learning activities.

This means that if you click on your courses in the Student Portal, you will be redirected to the Canvas LMS. You can use Canvas to access all materials, articles, assignments and messages for your courses.

To Canvas
studentportal.maastrichtuniversity.nl > **My Courses**

Instruction video Canvas
um-sbe.com/instruction-canvas

Canvas Student App
um-sbe.com/canvas-app



Course and exam registration

You will be registered for your first-year courses and first-sit exams by SBE. As of your second year, you will need to register yourself via the Student Portal.

- Check the outline of your study programme via sbeosp.maastrichtuniversity.nl
- Your Timetable is visible via the Student Portal > My Timetable
- If you are not registered for courses in P1, please contact the SBE Education and Exams Office via Ask SBE (www.asksbe.nl)

Important tips

- ✓ Study related questions? First check the **Intranet**:
intranet.maastrichtuniversity.nl/en/school-business-and-economics-students or via Student Portal > MyLinks > MySBE
- ✓ If you cannot find it on intranet, go to Ask SBE: www.asksbe.nl
- ✓ During opening hours, you can also go to the Information Desk at Tongersestraat 53 (main building SBE)





Books can be bought via
WO4YOU (online)

www.wo4you.nl



Pick up your **UM card**
at Tapijn



Printing, copying & scanning

- Multiple ways to print:
 - **Print portal** - print.maastrichtuniversity.nl
 - **Campus Print app** for iOS and Android
 - **UM_Printer** on Student Desktop (Anywhere) or install the UM Internet Printer on your own device
- Print jobs can be collected at **any** printer ("follow you queue")
- Pay with your **UMcard**
- Scans are free of charge
- Visit the **Canon shops** for custom printing and supplies (@Inner City Library and Randwyck Library)



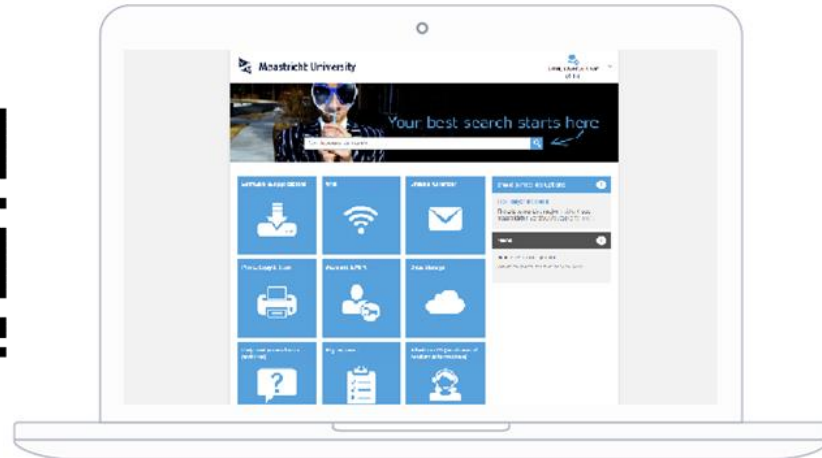
IT support by ICTS

Do you want to...

- ✓ Know how to connect your UM email to your personal email?
- ✓ Link your Timetable to your online calendar app on your phone or laptop?
- ✓ Download software like Office 365 or SPSS for free?
- ✓ Know how to connect to the WiFi?
- ✓ Know how to storage your data?
- ✓ Reach out for IT support?

Go to the ICTS Self-Service Portal

servicedesk.icts.maastrichtuniversity.nl



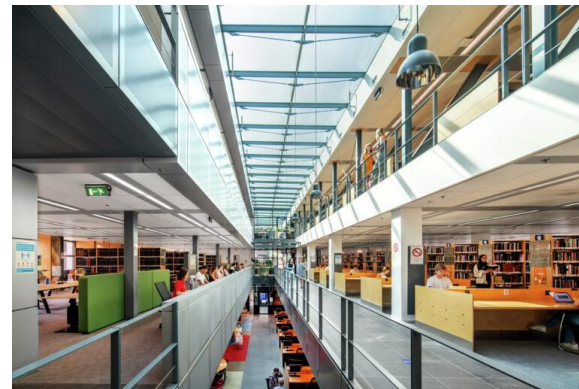
UM Library

Getting acquainted with the Library

- > 3000 study places
- 6 locations
 - Inner City Library
 - Randwyck Library
 - Tapijn 11 + Tapijn Loods V
 - University Sports Centre
 - Paul-Henri Spaaklaan

Reserve your study place
umlib.nl/studyplace-reservation

More information
umlib.nl/newstudents



Questions about your registration at UM?

For example about the payment of tuition fees, uploading a diploma or copy of your passport, or picking up your UM card?

Visit the **Student Service Centre**
study@maastrichtuniversity.nl
Bonnefantenstraat 2



SBE Student & Career Counselling



Eva Ipektzidou



Anja Schoumackers



Joey Mak



Julika Salb



Kontessa Legaki



Bob Joormann



Erik Kikas



Make an appointment

- Scan **QR code**, or
- Go to *SBE Student Intranet > Advice, Support & Counselling > SBE Student & Career Counselling*

Email: studentadvising-sbe@maastrichtuniversity.nl

Join our online communities

Join us on **social media** to stay updated and connected!



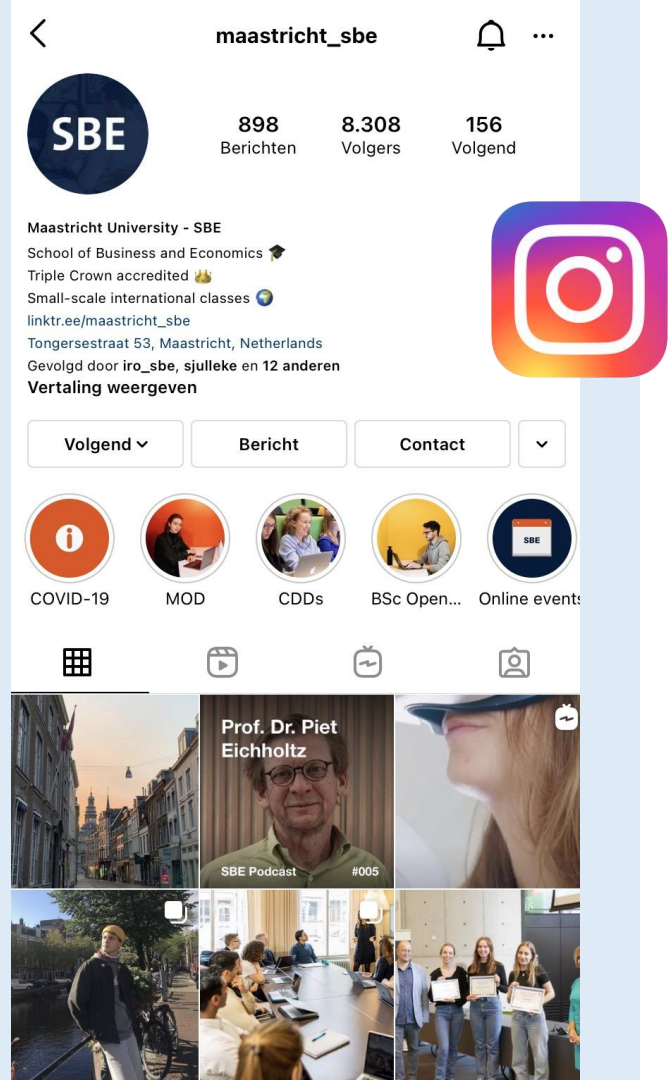
@maastricht_sbe



Maastricht University School of Business and Economics



School of Business and Economics



Didn't catch everything?



Download this presentation

um-sbe.com/intro-bsc



Check your UM e-mail

In the following weeks, we will share important information, as well as tips and tricks, to offer you a smooth start at SBE!

**Please fill in
the survey!**



Do you have any questions?

