



# Welcome to Maastricht University

## School of Business and Economics

Bachelor's Introduction Day

## Outline of the Day

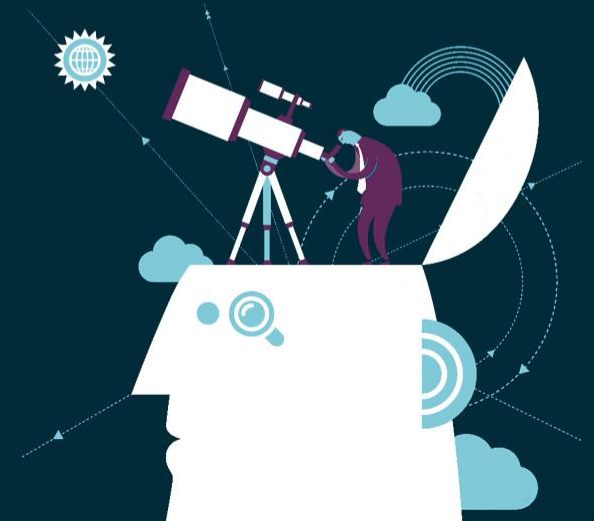
<b>10.00-11.00</b>	Opening Lecture @ Aula
<b>11.00-11.30</b>	Icebreaker & get to know your buddy and group
<b>11.30-12.15</b>	Lunch in the SBE Garden
<b>12.15-13.15</b>	Important information by buddy
<b>13.15-13.45</b>	The “Are you okay?” lecture @ Aula
<b>13.45-16.00</b>	Rotation schedule
<b>16.00-...</b>	Drinks by SCOPE in the SBE Garden



## Your community group

- Same group as today's group incl. the same or a new mentor (experienced SBE student)
- Mentors are here to help you to find your way around SBE and the city of Maastricht. Feel free to ask all your questions regarding studies and personal matters.
- As a community member you not only benefit from your mentor's support, but also from the other community members – you all go through this together!

# SBE Community Programme



## Join the Community WhatsApp group!

- Please join today's WhatsApp group via the QR code shared by your buddy
- Your mentor is already part of the WhatsApp group. He/ she will introduce themselves later today!
- Get information quick and an easy way to ask questions!

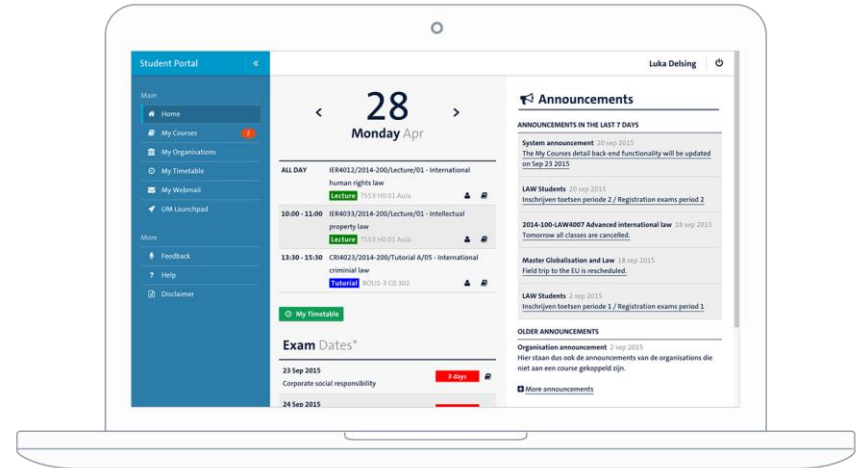
# Student Portal

Your one-stop location for accessing and managing your personal university information.

For accessing your **course material**, answering your **e-mail** and browsing your **timetable**, managing your **course registrations**, and checking your **grades**.

To the Student Portal  
[studentportal.maastrichtuniversity.nl](http://studentportal.maastrichtuniversity.nl)

Instruction video Student Portal  
[um-sbe.com/instructions-student-portal](http://um-sbe.com/instructions-student-portal)



# Canvas

**Your learning management system (LMS) for support on teaching and learning activities.**

This means that if you click on your courses in the Student Portal, you will be redirected to the Canvas LMS. You can use Canvas to access all materials, articles, assignments and messages for your courses.

**To Canvas**  
[studentportal.maastrichtuniversity.nl](https://studentportal.maastrichtuniversity.nl) > **My Courses**

**Instruction video Canvas**  
[um-sbe.com/instruction-canvas](https://um-sbe.com/instruction-canvas)

**Canvas Student App**  
[um-sbe.com/canvas-app](https://um-sbe.com/canvas-app)



## Course and exam registration

**You will be registered for your first-year courses and first-sit exams by SBE. As of your second year, you will need to register yourself via the Student Portal.**

- Check the outline of your study programme via [sbeosp.maastrichtuniversity.nl](https://sbeosp.maastrichtuniversity.nl)
- Your Timetable is visible via the Student Portal > My Timetable
- If you are not registered for courses in P1, please contact the SBE Education and Exams Office via Ask SBE ([www.asksbe.nl](https://www.asksbe.nl))



## Important tips

- ✓ Study related questions? First check the **Intranet**:  
[intranet.maastrichtuniversity.nl/en/business-engineering](https://intranet.maastrichtuniversity.nl/en/business-engineering)
- ✓ If you cannot find it on intranet, go to the [contact form](#) on the Intranet
- ✓ During opening hours, you can also go to the Information Desk at Tongersestraat 53 (main building SBE)





**Books** can be bought via  
**WO4YOU** (online)

[www.wo4you.nl](http://www.wo4you.nl)



Pick up your **UM card**  
at Tapijn



# Printing, copying & scanning

- Multiple ways to print:
  - **Print portal** - [print.maastrichtuniversity.nl](https://print.maastrichtuniversity.nl)
  - **Campus Print app** for iOS and Android
  - **UM\_Printer** on Student Desktop (Anywhere) or install the UM Internet Printer on your own device
- Print jobs can be collected at **any** printer ("follow you queue")
- Pay with your **UMcard**
- Scans are free of charge
- Visit the **Canon shops** for custom printing and supplies (@Inner City Library and Randwyck Library)



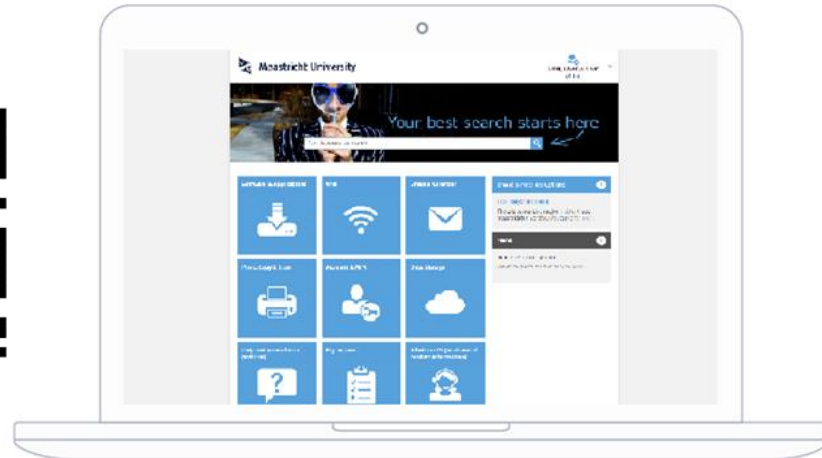
# IT support by ICTS

## Do you want to...

- ✓ Know how to connect your UM email to your personal email?
- ✓ Link your Timetable to your online calendar app on your phone or laptop?
- ✓ Download software like Office 365 or SPSS for free?
- ✓ Know how to connect to the WiFi?
- ✓ Know how to storage your data?
- ✓ Reach out for IT support?

Go to the ICTS Self-Service Portal

[servicedesk.icts.maastrichtuniversity.nl](https://servicedesk.icts.maastrichtuniversity.nl)



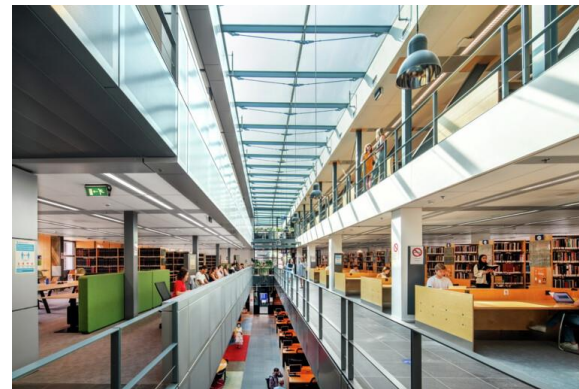
# UM Library

## Getting acquainted with the Library

- > 3000 study places
- 6 locations
  - Inner City Library
  - Randwyck Library
  - Tapijn 11 + Tapijn Loods V
  - University Sports Centre
  - Paul-Henri Spaaklaan

**Reserve your study place**  
[umlib.nl/studyplace-reservation](https://umlib.nl/studyplace-reservation)

**More information**  
[umlib.nl/newstudents](https://umlib.nl/newstudents)



# Questions about your registration at UM?

For example about the payment of tuition fees, uploading a diploma or copy of your passport, or picking up your UM card?

Visit the Student Service Centre  
[study@maastrichtuniversity.nl](mailto:study@maastrichtuniversity.nl)  
Bonnefantenstraat 2



# SBE Student & Career Counselling



Eva Ipektzidou



Anja Schoumackers



Joey Mak



Julika Salb



Kontessa Legaki



Bob Joormann



Erik Kikas



## Make an appointment

- Scan **QR code**, or
- Go to *SBE Student Intranet > Advice, Support & Counselling > SBE Student & Career Counselling*

Email: [studentadvising-sbe@maastrichtuniversity.nl](mailto:studentadvising-sbe@maastrichtuniversity.nl)

# Join our online communities

Join us on **social media** to stay updated and connected!



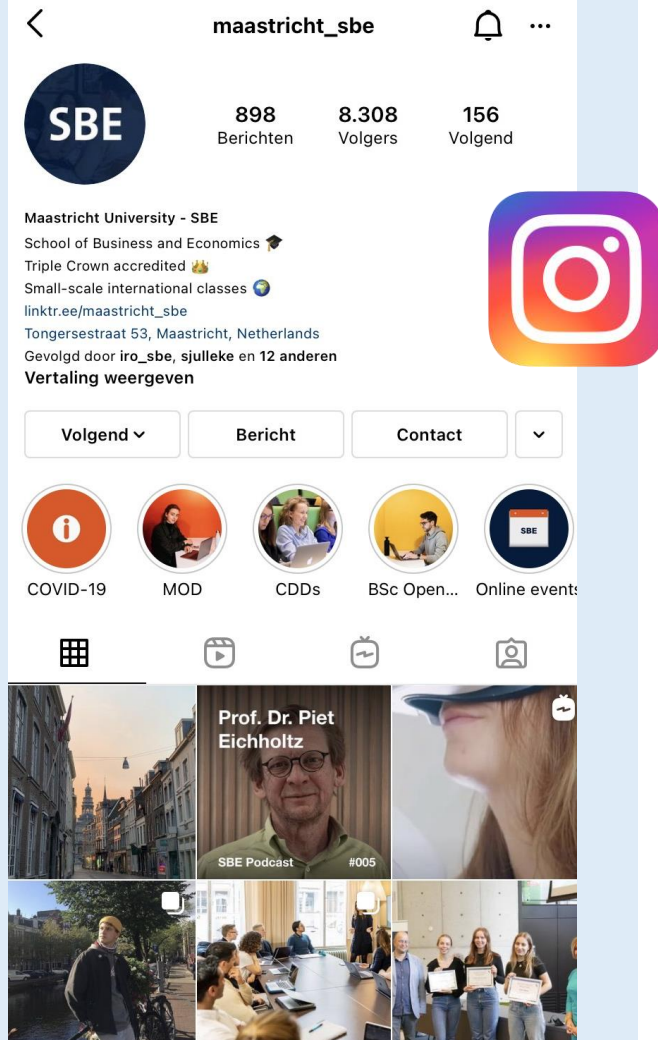
@maastricht\_sbe



Maastricht University School of Business and Economics



School of Business and Economics





# Didn't catch everything?



**Download this presentation**

[um-sbe.com/intro-bsc-be](https://um-sbe.com/intro-bsc-be)



**Check your UM e-mail**

In the following weeks, we will share important information, as well as tips and tricks, to offer you a smooth start at SBE!

Please fill in  
the survey!



Do you have any questions?

