



WELCOME TO

Maastricht University BSc Business Engineering

**WE ARE EXCITED TO HAVE YOU
JOIN OUR COMMUNITY!**



Opening Session Introduction Day

PRESENTED BY:

1. Prof. Dr. Gaby Odekerken-Schröder, *Associate Dean*
2. Dr. Lieven Quintens and Dr. Carla Koopman, *Programme leaders*
3. Dr. Mark Vluggen, *Scientific Director*
4. Erik Kikas, *Student and Career Counsellor*
5. Deborah Kaut, *Student Representative*
6. Elsa Weber and Greta Klein, *BENGI*

Hosted by:

Emilia Goralska, *Business Engineering student*

Programme of the day

Time	Activity
09:30	Registration
10:00	Welcome and opening session
11:00	Ice-breaker & meet your group
11:30	Lunch
12:15	Important information by your intro buddy
13:15	The 'Are you okay?' lecture
13:45	Rotation Schedule: <i>UM & City Tour, Information market and UMSports!</i>
16:00	Drinks by SCOPE



Prof. Dr. Gaby Odekerken-Schröder

Associate Dean Internationalisation and Collaboration

Professor in Customer-Centric Service Science
Department of Marketing and Supply Chain Management

Experience Maastricht University

Right in the heart of Europe





Join at

slido.com

#BEIntro23

slido



Why did you choose to study at Maastricht University? (one word)

ⓘ Start presenting to display the poll results on this slide.



Faculty of Science and Engineering

About 3,000 students

7 bachelor and 5 master programmes

Collaboration with all 4 Brightlands campuses



School of Business and Economics

About 6,000 students

5 bachelor and 28 master programmes

170+ partner universities

Code of Conduct





Dr. Carla Koopman

Programme Leader
Faculty of Science and Engineering



Dr. Lieven Quintens

Programme Leader
School of Business and Economics

slido



What is your nationality?

ⓘ Start presenting to display the poll results on this slide.

Brightlands

Knowledge crossing borders



Brightlands Campus Greenport Venlo

Healthy and safe nutrition, future farming
and bio-economy



Brightlands Chemelot Campus

Smart materials and sustainable
chemical production



Brightlands Smart Services Campus

Data science and smart services



Brightlands Maastricht Health Campus

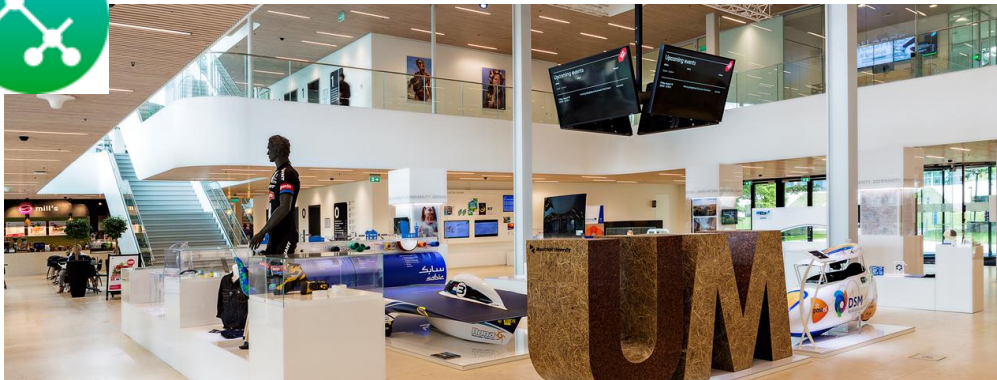
Regenerative and precision medicine,
innovative diagnostics



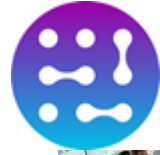
Brightlands Maastricht Health Campus



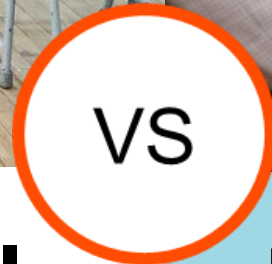
Brightlands Campus Greenport Venlo



Brightlands Chemelot Campus



Brightlands Smart Services Campus



High School

Directive teaching style
More than 30 students
Homework
Mostly alone
Less application
8 hours classes per day

University

Problem Based Learning
Maximum of 15 students
Self-study
Teamwork
Theory into solutions
10-12 hours classes per week

University life





Dr. Mark Vluggen

Scientific Director, Education Institute

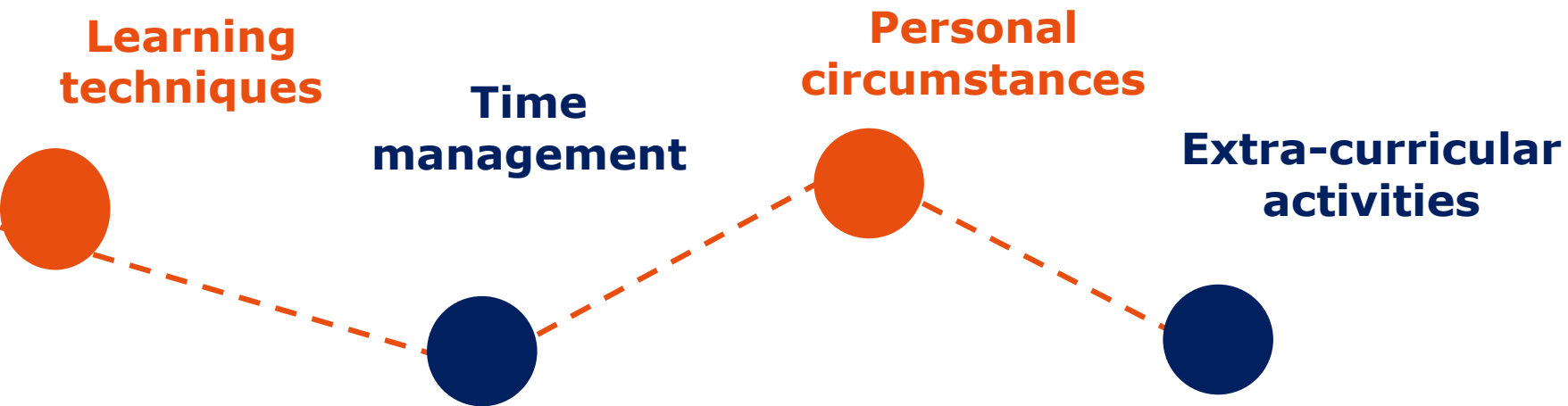
PhD in Enterprise Resource Planning
Department of Accounting and Information Management



Erik Kikas

Student and Career Counsellor

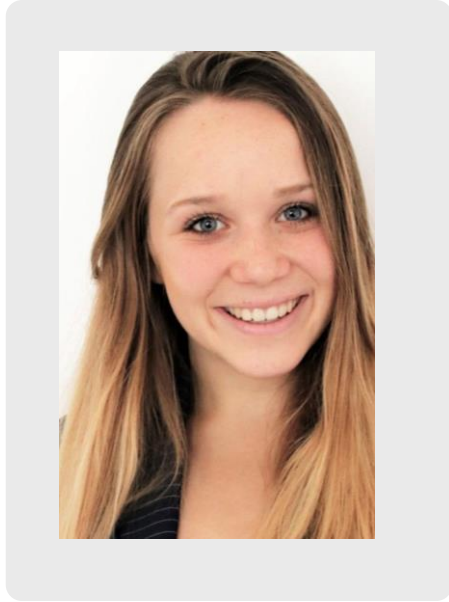
Reaching out to a Student and Career Counsellor?



Community Programme

- **Peer-to-peer support**
- Meet new people
- Join a **WhatsApp group**
- **Student mentor** (experienced SBE student)
- Tackle academic and non-academic questions
- Supported by SBE staff





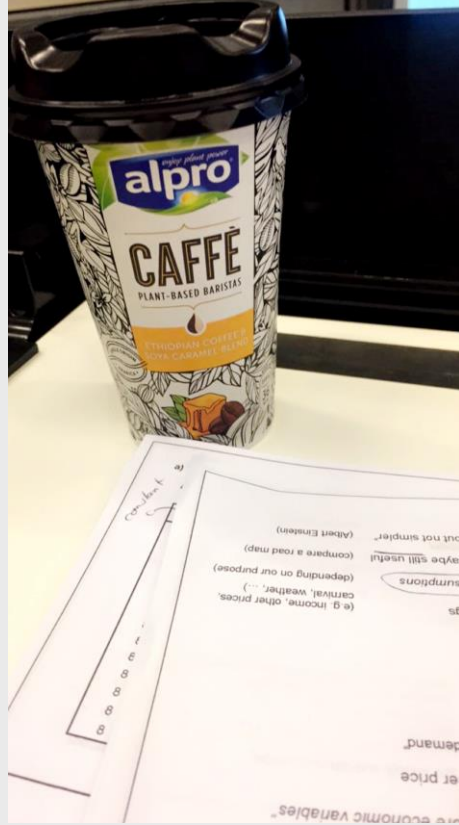
Deborah Kaut

Student Representative

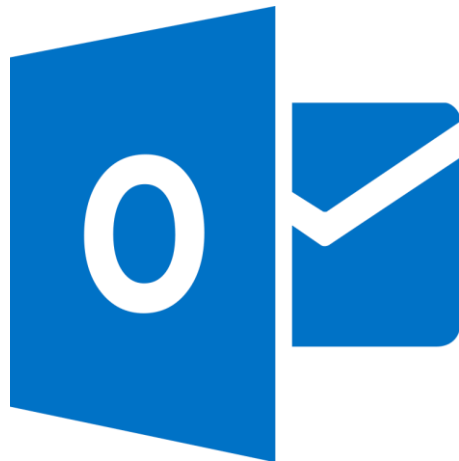


Cedric Pots

Student Representative
(incoming)



Check your **UM mail (!!)** and join us
on **Instagram** to stay updated!



 @maastricht_sbe

Follow for updates & news

Other social media channels



Maastricht University School of Business
and Economics



School of Business and Economics



@maastrichtsb



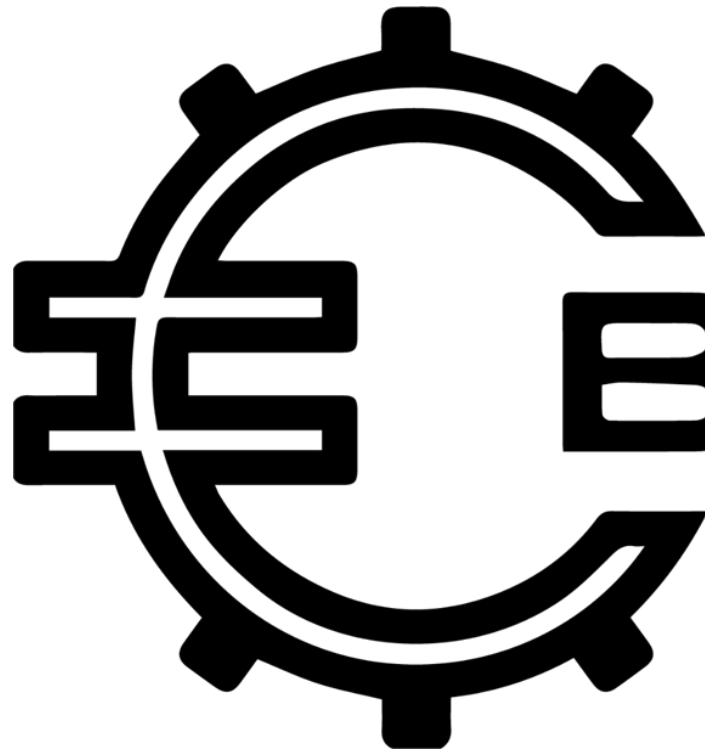
Elsa Weber

BENGI Treasurer



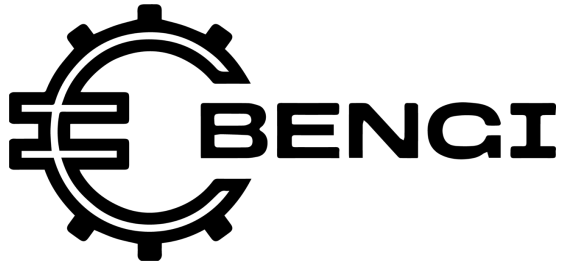
Greta Klein

BENGI Board Member



**The Study Association for
Business Engineering students!**

BENCI




Who are we?

Established in 2021, we have grown rapidly to become a bridge between students and companies that BENGI has partnered with.



Go
the extra
mile

What we offer

- **Support in general matters**
 - **Several student discounts** (*e.g. with Wienkontor, Soupbro's, etc*)
 - **(Exclusive) Academic and Informative events**
 - **Buddy program**
 - **Internal booksale**
- 



Go
the **extra**
mile

+ COSTUME

BEER PONG TOURNAMENT

March 23rd at 21:00
Wienkontor Bk7



ELECTIVES INFO-EVENING

Ask questions to 2nd and
3rd Year Students

Monday 12th
16:00

Tapijn Kazerne
Room: 10.011



1st Year Student

Hey! Could you help me?

BUDDY PROGRAM

SIGN UP IN THE
LINK OF OUR BIO





Science and Engineering
Association Limburg



Programme of the day

Time	Activity
09:30	Registration
10:00	Welcome and opening session
11:00	Ice-breaker & meet your group
11:30	Lunch
12:15	Important information by your intro buddy
13:15	The 'Are you okay?' lecture
13:45	Rotation Schedule: <i>UM & City Tour, Information market and UMSports!</i>
16:00	Drinks by SCOPE

Thank you -
Have a great
journey at
Maastricht
University!

