

Would you like to organise an event at UM Campus Brussels?

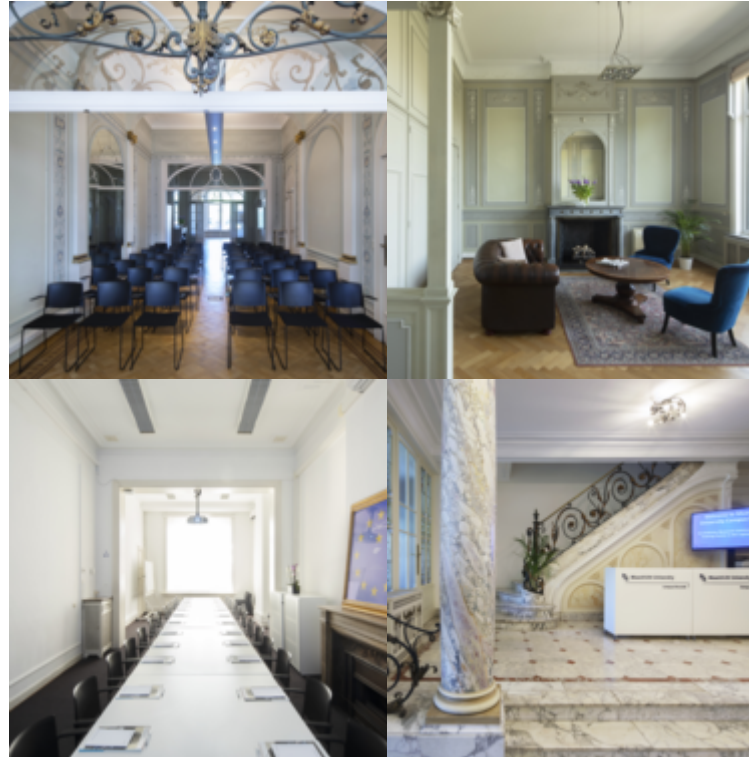
The Campus team provides **UM staff** and **students** with support in organising activities in Brussels.

Some examples of the support Campus Brussels can provide are:

- Coordination of local suppliers
- Registration management
- Communication, advertising and outreach to the Brussels audience
- Advice on programme design
- Preparation of meeting rooms, including ICT and media
- Preparation of conference materials
- On-site team support

For more details, please contact the UM Campus Brussels team at campusbrussels@maastrichtuniversity.nl

We look forward to welcoming you at UM Campus Brussels!



Contact

Maastricht University Campus Brussels
 Tervurenlaan 153, 1150 Brussels
 Phone: +31 43 388 4392
 Email: campusbrussels@maastrichtuniversity.nl
www.maastrichtuniversity.nl/campusbrussels

www.maastrichtuniversity.nl/campusbrussels



Branching out in Europe

Maastricht University Campus Brussels

An introduction to UM's activities in the European Union capital

What's in it for you?

UM Campus Brussels: “Branching out in Europe”

The Campus creates opportunities for the education and research that would not be possible without a strong presence in the European capital. This is achieved through the Campus’ three functions: *Teaching and Training*, *Research Community Hub*, and *UM Embassy*.

The work of the Campus is illustrated with the “Campus Brussels tree”. The Campus is **rooted in Maastricht** and nourished by the Faculties, the Executive Board, and Maastricht University Office. It then **flourishes in Brussels** and produces ‘added-value fruits’ that are brought back to UM.

This added value comes in the form of increased (quality of) **research outputs** as well as **network expansion**, enhanced **visibility** in Brussels, and more opportunities for collaboration vis-à-vis international stakeholders.

The tree also showcases how Campus Brussels brings together the entire university. Everyone within the UM community – students, alumni, researchers, educators, support staff, (inter)national partners – can benefit from it and contribute to its success.



Teaching and Training

The Campus is a platform to offer (executive) **courses** and (post-academic) **trainings** organised by UM staff and students. These activities often touch upon **European Union (EU) issues** and combine theoretical discussions with practical inputs. The strategic location of the Campus, close to the EU institutions, provides **access to EU policy-makers** and senior professionals that share their experiences. The Campus also offers professionals the opportunity to follow part-time **PhD programmes**, currently in European and Comparative Law and in European Studies, that can be followed alongside a full-time job.

Another important aspect of the Campus’ Teaching and Training function is to **add value to programmes taught in Maastricht**. This is regularly done by organising trips to Brussels in which students receive insights from policy-makers and professionals in their field of study, which is also a useful way for course directors to spot talent for guest lecturers.

Research Community Hub

Campus Brussels also functions as a **meeting and conference venue** that UM researchers can make use of in order to discuss work in progress as well as **disseminate and showcase research** findings to a European and international audience. The Campus is also a useful platform for preparing research bids for EU funding programmes, making it easier to share ideas with EU policy-makers and international project partners thanks to its strategic location.

The Campus infrastructure can be included in project proposals as a venue in which to hold kick-off, midterm review, and project conclusion meetings - a definite added value for EU-funded projects. Researchers benefit from a visible position as they can **host meetings at Maastricht University while away from Maastricht**. The Campus Brussels team provides **logistical support** for all Brussels matters in order for researchers to concentrate on content.



Embassy

The third function of Campus Brussels is that of an Embassy of Maastricht University in the European Union capital. This function, connected to UM’s **knowledge transfer** mission, is transversal and adds value to both the university’s Education and Research ambitions.

Campus Brussels acts as a **liaison office** between UM, other universities, and the EU arena, offering the UM community a gateway to Europe. Through its active presence in Brussels, it maintains and expands the **network** of the university, creating synergies for **international collaboration** in both research and education. The Campus also keeps in close contact with **UM alumni** in Brussels and engages in information gathering to keep abreast of **EU policy** developments relevant for UM.

