

Welcome to the Master's Open Day

Governance and Leadership in European Public Health



Kimberly Angela (GLEPH student)
Daan Beaten (GLEPH student)
Minh Hang Hoang Le (GLEPH student)
Mariam Shokralla (GLEPH student)
Sidharth Tripathi (GLEPH student)
Anna Wurm (GLEPH student)

Kasia Czabanowska
(Assoc. Prof. Programme Director)



Who?

Staff Profile*: Strands & Module Coordinators



Helmut Brand
European Public Health



Kasia Czabanowska
Leadership



**Peter Schroder
Back**



Timo Clemens



David Townend



Genc Burazeri



Rok Hrzic
M-GLEPH 2016-2017

Strand coordinators



Helmut Brand
European Public
Health



**Kasia
Czabanowska**
Leadership



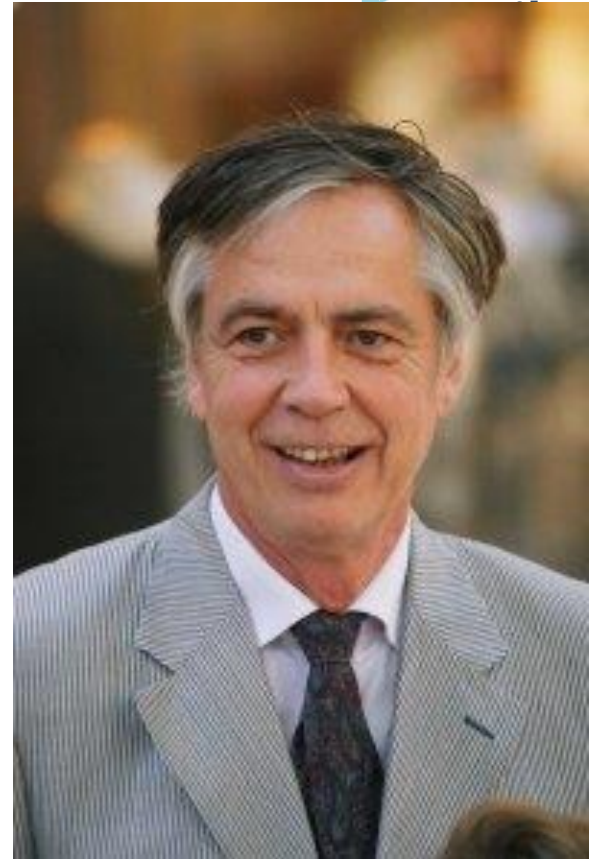
**David Townend &
Peter Schroder**
Governance

WHY

“Today’s public health professionals need to be able to lead in contexts where there is **considerable uncertainty** and **ambiguity**, and where there is often **imperfect evidence** and an absence of agreement about the precise nature of the problem and the solutions to it”

WHY?

- “Graduates of European Public Health are needed at all levels: national, regional and local.”
- We need effective public health workforce to address contemporary public health challenges.
- Need for graduates in European Public Health who understand the governance structures and processes and who know how to lead and where to lead to.



Fernand Sauer

Honorary Director General of the European Commission

First Director of the European Medicines Agency

Our mission statement

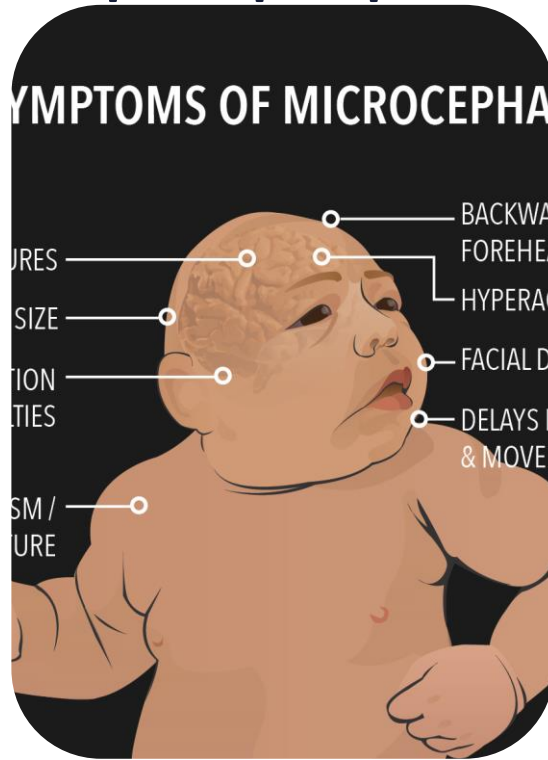
We educate and develop public health professionals able to **search for, identify, transfer and implement best practices** in Europe using skills of **effective leadership and understanding of multilevel governance.**



Unique European perspective



Health is a global priority



Complex public health challenges



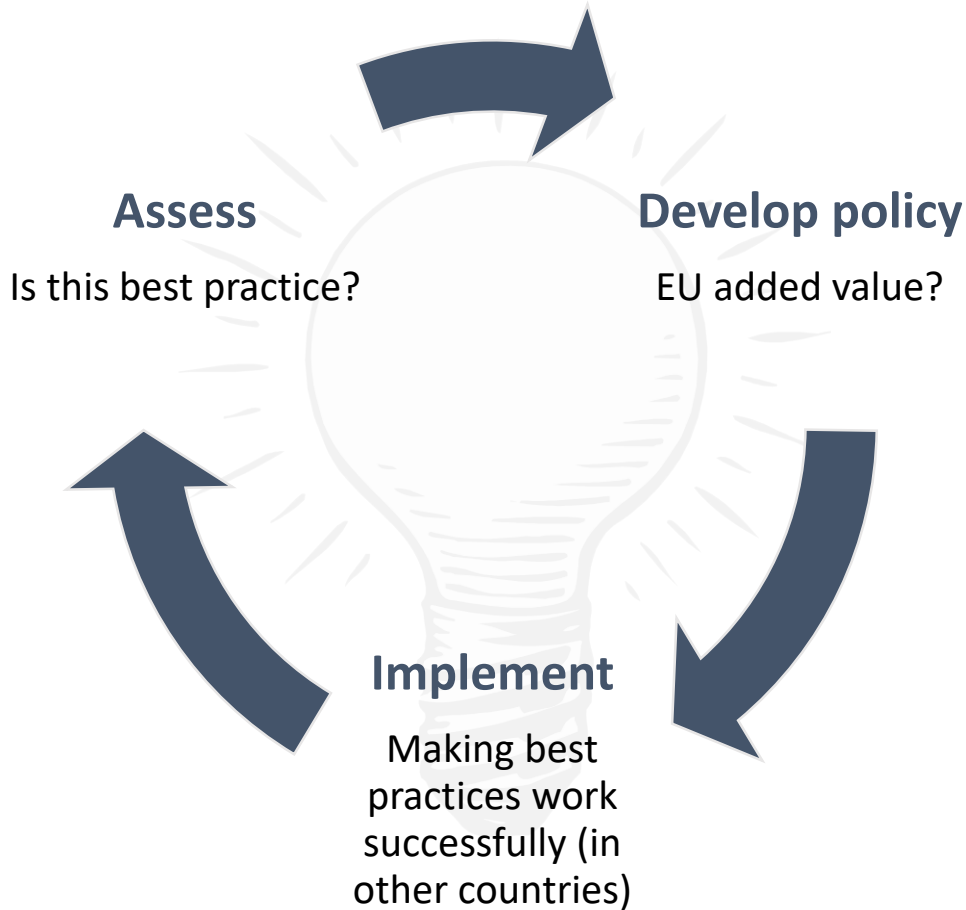
Unique Master's programme

How?



Basic idea of M-GLEPH





Key facts about M-GLEPH

- 1 year Programme (40 weeks & 60 ECTS)
- Full-time
 - Contact hours Thursdays & Fridays
- All content in English
- Interactive and project/problem-based teaching in small groups

Master Governance and Leadership in European Public Health 2018-2019

Leadership Strand 6 EC

Introduction to Governance and Leadership in European Public Health 4 weeks 5 EC	Measuring and Comparing Health in Europe Quantitative and Qualitative approaches 4 weeks 5 EC	Identifying and Assessing Good and Best Practices in Health 4 weeks 5 EC	Europe as one Zone: European Health Law and Policies 4 weeks 5 EC	Research Methods 4 weeks 6 EC
Governance Strand				

Diffusion, Implementation and Quality Assurance of Health Innovations in Europe 4 weeks 6 EC	Global Health Management 4 weeks 4 EC	The EU, Enlargement and Global Health 2 weeks 3 EC	Research Project and Masters' Thesis 10 weeks - 15 EC
Governance Strand			

FHML - Maastricht University
Calendar Master Governance Leadership in EPH / 2018 - 2019

		wk	Mo	Tue	Wed	Thu	Fri		SAP-code
September	1	36	3	4	5	6	7	Introduction to Governance and Leadership in European Public Health	EPH4014
	2	37	10	11	12	13	14		
	3	38	17	18	19	20	21		
	4	39	24	25	26	27	28	assignment	Public Health Leadership Strand*
October	1	40	1	2	3	4	5	Measuring and Comparing Health in Europe	EPH4012
	2	41	8	9	10	11	12		
	3	42	15	16	17	18	19		
	4	43	22	23	24	25	26	assignment	Public Health Leadership Strand*
November	1	44	29	30	31	1	2	Identifying and Assessing Good and Best Practices in Health	EPH4003
	2	45	5	6	7	8	9		
	3	46	12	13	14	15	16		
	4	47	19	20	21	22	23	assignment	Public Health Leadership Strand*
December	1	48	26	27	28	29	30	Europe as one Zone: European Health Law & policies	EPH4004
	2	49	3	4	5	6	7		
	3	50	10	11	12	13	14		
	4	51	17	18	19	20	21	exam Fr 21/12	Public Health Leadership Strand* exam Mo 17/12
		52	24	25	26	27	28	Christmas holiday	
January		1	31	1	2	3	4		
	1	2	8	9	10	11	12	Research Methods	HPI4005
	2	3	15	16	17	18	19		
	3	4	22	23	24	25	26		
February	4	5	29	30	31	1	2	papers	
	1	6	4	5	6	7	8	Diffusion, Implementation and Quality Assurance of Health Innovations in Europe education on Thursday	EPH4013
	2	7	11	12	13	14	15		
	3	8	18	19	20	21	22		
March	4	9	25	26	27	28	1	assignment + exam Fr 1/3	
		10	4	5	6	7	8	Carnival holiday - resits period 1 & 2	
	1	11	11	12	13	14	15	Global Health Management Monday + Thursday	MPH0007
	2	12	18	19	20	21	22		
	3	13	25	26	27	28	29		
April	4	14	1	2	3	4	5	exam Thu 4/4	
	1	15	8	9	10	11	12	The EU, Enlargement and Global Health**	EPH4008
	2	16	15	16	17	18	19	assignment	
	1	17	22	23	24	25	26	Research Project and Masters` Thesis	EPH4011
May	2	18	29	30	1	2	3		
	3	19	6	7	8	9	10		
	4	20	13	14	15	16	17		
	5	21	20	21	22	23	24		
June	6	22	27	28	29	30	31		
	7	23	3	4	5	6	7		
	8	24	10	11	12	13	14		
	9	25	17	18	19	20	21		
	10	26	24	25	26	27	28		
July	11	27	1	2	3	4	5	deadline for submission research thesis	
		28	8	9	10	11	12	resits period 4 - 6 - 7	
		29	15	16	17	18	19		
		30	22	23	24	25	26		
August		31	29	30	31	1	2		
		32	5	6	7	8	9		
		33	12	13	14	15	16		
		34	19	20	21	22	23		
		35	26	27	28	29	30		
September		36	2	3	4	5	6		

* generally on Fridays, sometimes additional sessions on different day (subject to timetable alterations)

** not for ERASMUS MUNDUS-student

Start modules

Vacations / holidays: Good Friday 19 April, Easter Monday 22 April, Ascension day 30 May, Bridging day 31 May, Whit Monday 10 June

Exam

Though great care has been taken to assure the accuracy of the calendarium, the FHML cannot be held responsible for possible printing errors, incomplete information, or misinterpretations. Additionally, the FHML reserves the right to make changes to the calendarium.

M-GLEPH schedule and content: 1st Semester

Leadership strand (Kasia Czabanowska)

Sep –
Dec

Modern theories of (PH) leadership
Coaching and Mentoring sessions

6 ECTS



Received a success story
title from the European
Commission in 2015



External leadership trainers



Suzanne Marie Babich



Nick Fahy



Sally Fowler-Davis



Catherine Hannaway



Kenneth A. Rethmeier



Tony Smith

How do we compare?

- While other health related masters focus on either national or global perspectives, we are the only unique one with the **focus on Europe**.
- Contrary to many other public health programmes, we provide **full public health leadership training** based on a modern competency model.




Key Action 1 - Erasmus Mundus Joint Master Degrees

European Master in Public Health
- EuroPubHealth Plus -



Governance and Leadership in European Public Health

*****Awarded 'Top Rated Programme' label, Keuzegids 2018*****

Do health policies intrigue you, and are you fascinated by the EU? Are you interested in why European health guidelines work in one country but not another? Then Governance and Leadership European Public Health might just be the programme for you. This unique programme provides you with the background and skills to analyse public health systems throughout Europe. Upon graduation, you'll be able to prepare, support and monitor high-level decision-making processes in European institutions, in government, and in public and private organisations. The programme will equip you with all the training you need to pursue as a health policy maker, but careers in research will also be open to you. [Download our full infopack](#) 

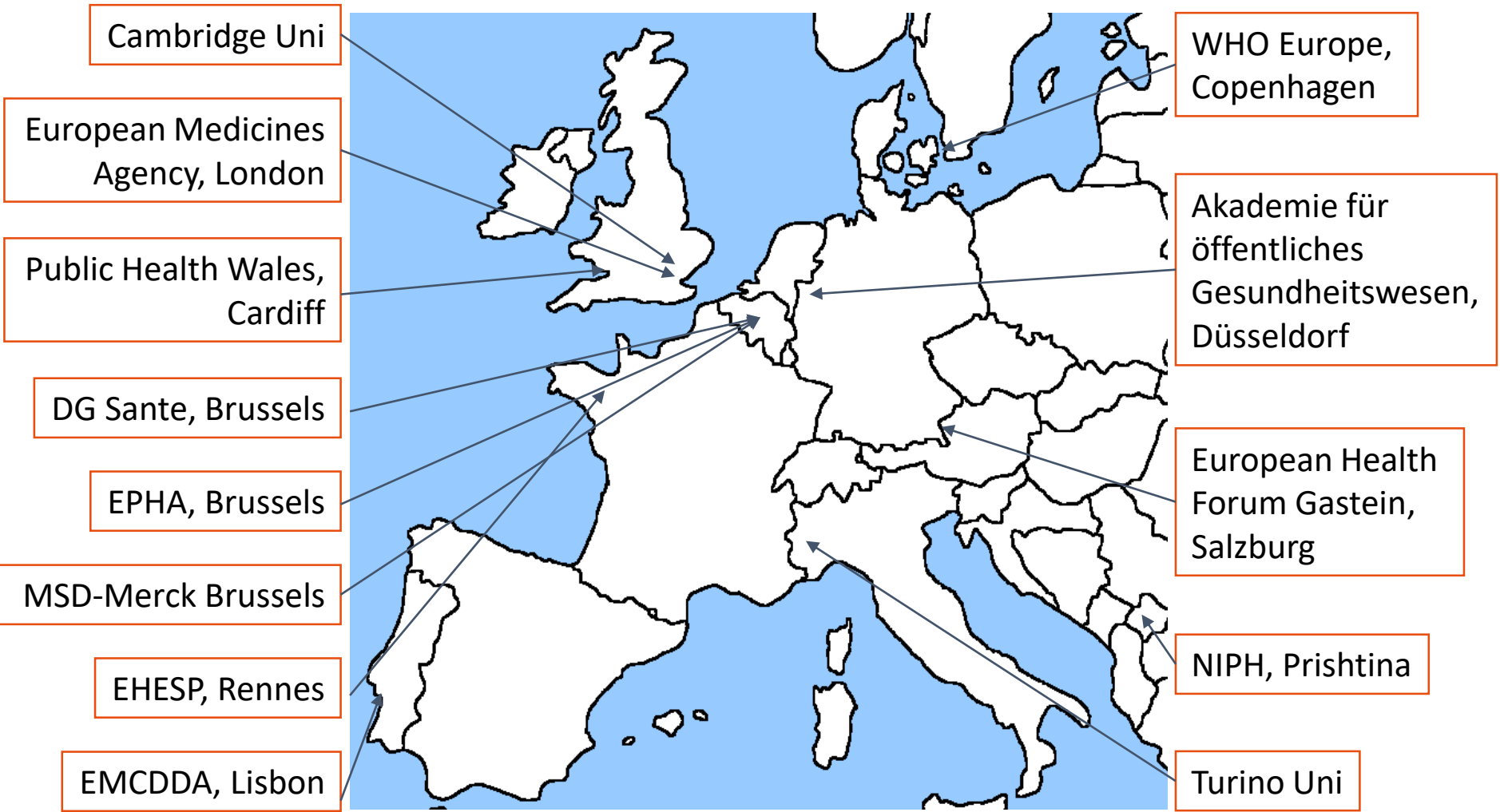
Also available as a [double degree programme](#)



Double Degree with Bremen University (GER)

- Double Degree since 2018
- Starting at *Bremen University* (1st year)
 - First year of: Master of Arts: Public Health - Gesundheitsversorgung, -ökonomie und -management
 - Programme is in German.
- Continuing at Maastricht University (2nd year)
 - Full year of: Master of Science in Governance and Leadership in European Public Health
- After 2 years: two master degrees (MA & MSc)
- Limited spaces available, apply *before May 31st* via Bremen University. More info:
 - <https://www.uni-bremen.de/fb11/studium/>

(Some of the) placement options



Our graduates publish their MSc theses and win awards for their research...

Public Health Genomics

Review

Public Health Genomics 2013;16:135–144
DOI: 10.1159/000350703

Received: August 20, 2012
Accepted after revision: March 12, 2013
Published online: May 9, 2013

Equity in Public Health: An Epigenetic Perspective

G. Stapleton^a P. Schröder-Bäck^a D. Townend^b

Departments of ^aInternational Health and ^bHealth, Ethics and Society, Maastricht University, CAPHRI School for Public Health and Primary Care, Maastricht, The Netherlands

Journal of Public Health Advance Access published April 25, 2013

Journal of Public Health | pp. 1–7 | doi:10.1093/pubmed/kdt043

Local implementation of a syndromic influenza surveillance system using emergency department data in Santander, Spain

S. Schrell¹, A. Ziemann¹, L. Garcia-Castrillo Riesgo², N. Rosenkötter¹, J. Llorca^{2,3}, D. Popa¹, T. Krafft¹, on Behalf of the SIDARTha Project Consortium

¹Department of International Health, CAPHRI School of Public Health and Primary Care, Faculty of Health, Medicine and Life Sciences, Maastricht University, Maastricht, MD 6200, The Netherlands
²Departamento Clínica Médica y Quirúrgica, Facultad de Medicina, Universidad de Cantabria, Santander 39011, Spain
³CIPIRES/ISP Centro de Investigación Biomédica en Red, Epidemiología y Salud Pública and IRTM/IS Instituto de Investigación Marqués de Valdeolmillos, Santander 39008, Spain
Address correspondence to Alexander Ziemann, E-mail: alexander.ziemann@maastrichtuniversity.nl

REVIEWS

Evaluating interventions aimed at promoting social participation of older people: A review of the literature

Wesley Jongen, Peter Schröder-Bäck, Helmut Brand

Department of International Health, School for Public Health and Primary Care (CAPHRI), Faculty of Health, Medicine and Life Sciences, Maastricht University, The Netherlands.



Lisa Ploeg, our EPH master student took part in the Young Researcher's Forum organised by the ASHPER and won the first award for her thesis *'Diabetes and sustainable employability in the EU: A qualitative study'*.

... and go on to work in different fields of EPH

Academia



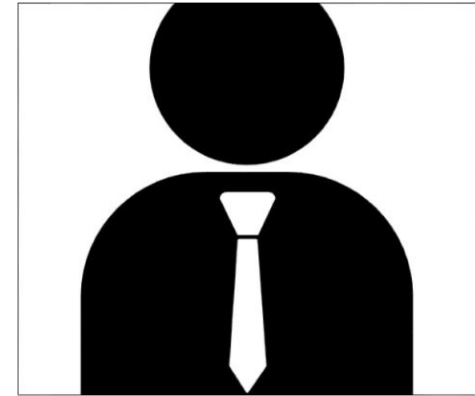
Junior
researcher
PhD candidate
Research fellow

Policy



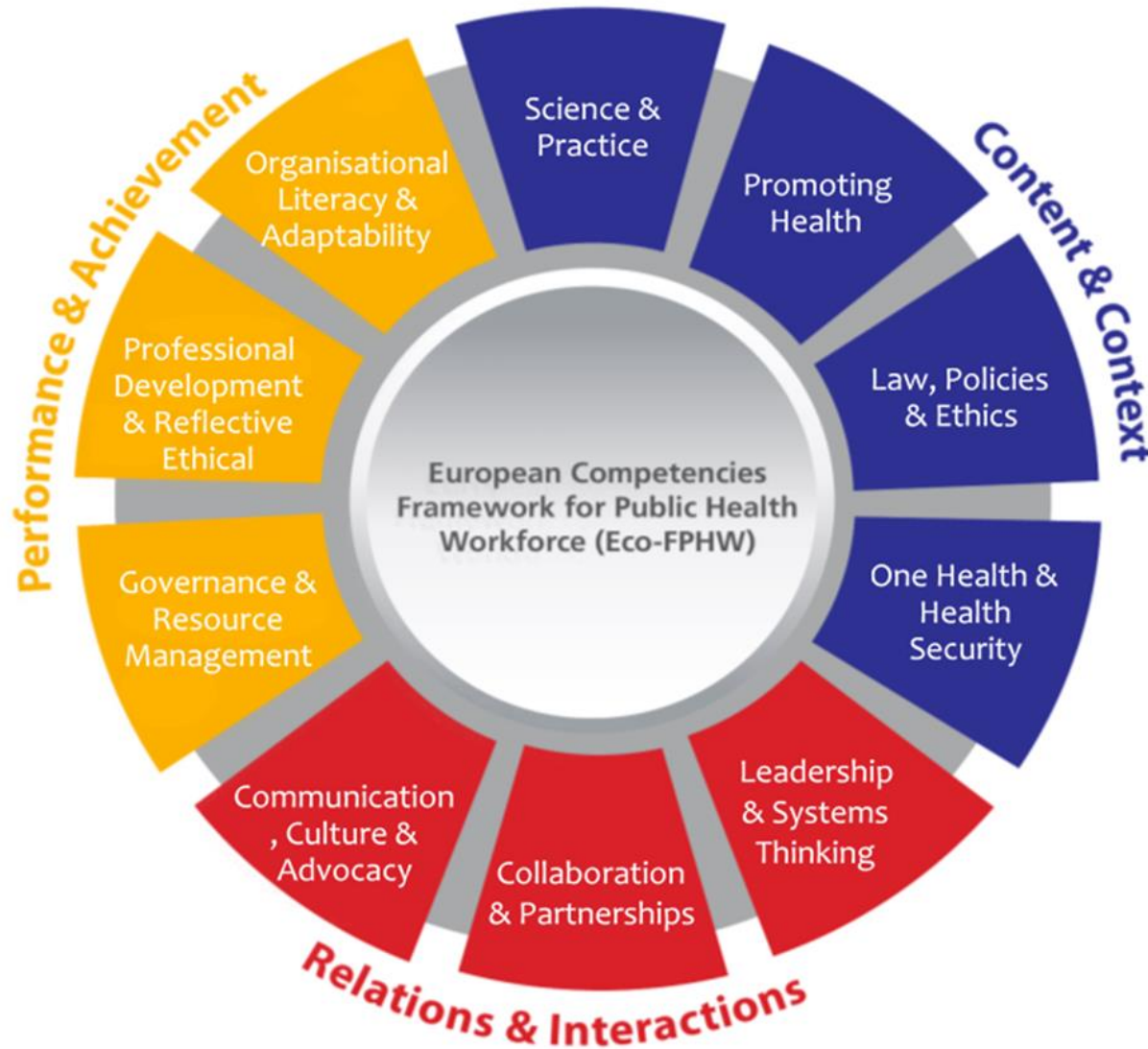
Policy officer
Advisor
Project officer

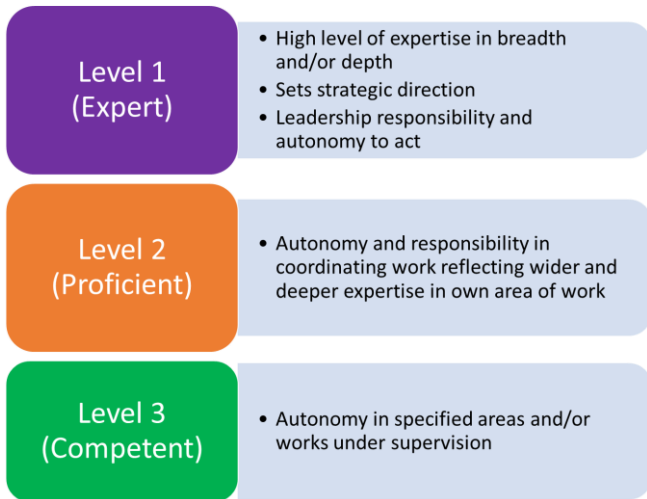
Business



Consultant /
associate
Application
coordinator
Project
manager

We prepare you for the job marked by developing public health competencies





Based on the Dreyfus Five-Stage model of Adult Skills Acquisition (Bull Sci Technol & Soc 2004(3);24:177-181) and Koo and Miner (Annu. Rev. Public Health 2010; 1:253-69)



Competency		Level 1	Level 2	Level 3
1.7	Designs and conducts research which is informed by evidence and which adds to the evidence base for public health practice, involving relevant stakeholders in this process	As a principal investigator in a research project, a level 1 academic will design and coordinate research and supervise a research team. You will also collaborate with research led by others. You will have an in-depth knowledge of research methods and analysis techniques	As a level 2 academic you will have day-to-day project management responsibilities and lead smaller research projects. You will be involved in data collection/analysis. You will have an in-depth knowledge of research methods and analysis techniques.	Level 3 academics have responsibilities for data collection/analysis. The non-academic workforce will have had research training as part of their degree and will use competency in research methods when working with public health researchers

Relations & Interactions

6. Collaboration & Partnerships

6.1 Works across sectors at the local/national/international level organisational structures

6.2 Understands the interdependency, integration, and competition among healthcare sectors and different actors who have interests in public health issues

6.3 Identifies, connects and manages relationships with stakeholders in interdisciplinary and inter-sectorial projects to improve public health services and achieve public health goals

6.4.....

6.5.....

Examples of M-GLEPH alumni jobs

- PhD Candidate with the School for Oncology and Developmental Biology (GROW) at Maastricht University
- HR Health Advisor at Fraport AG
- Clinical Research Associate at Grünenthal
- PhD Candidate at Maastricht University, Department of International Health
- Gentest Application Coordinator at Gentest, Istanbul
- Health Economics & Reimbursement EMEALA at Fresenius Medical Care
- Project Officer at Unie KBO

Examples of M-GLEPH alumni jobs

- Marie Curie Early Stage Researcher at University of Birmingham
- Business Consultant at Aranco Consultancy & Interim Management BV
- Administrative Assistant/Personal Assistant to Head of Unit & G7 Summit 2014 Protocol Officer at Council of the European Union
- Vice President & Lead Global Health Policy Epilepsy at UCB Pharma
- Country Preparedness Support at European Centre for Disease Prevention and Control (ECDC)
- Beleidsmedewerker Zorgontwikkeling at Coöperatie Cohesie U.A.
- Regulatory Project Officer at College ter Beoordeling van Geneesmiddelen

And more examples of alumni jobs

- EU Health Specialist at North of England EU Health Partnership
- Product Development Engineer at Synthes
- Beleidsmedewerker at Branchebelang Thuiszorg Nederland (BTN)
- Projectmanager Zorgeconomie at POM Limburg
- Medical Education Executive at PCM Healthcare Group
- Research Fellow at London School of Hygiene & Tropical Medicine
- Junior CRA at Clinical and Epidemiological Investigation Center at CRP-Santé
- Doctoral Candidate at Institute for Public Health and Nursing Research - University of Bremen

And more examples of alumni jobs

- PhD Student at Karolinska Institutet
- Cluster Clinical Trial Administrator at Novartis Vaccines and Diagnostics
- Intern at International Diabetes Federation
- Medical Advisor Rare Diseases & Ophthalmology at Pfizer
- Global Health Department at Catholic University of the Sacred Heart Rome
- Research Assistant at Johann Wolfgang Goethe University
- Head of Quality Control / Study Coordination at OUTPUT Pharma Service
- Associate at Boston Healthcare Associates, Berlin

(At least) 6 reasons to chose M-GLEPH



Unique European perspective



International students, staff & guest lecturers



Working in a small group of students with great access to and support from staff



Focus on best practice exchange – the current “hot” topic of EPH



10-week placement at key (European) public health institutions



Access to European health policy and research networks

Developing Leadership skills

You will be equipped with

- Professional, content knowledge
- Communication skills
- Leadership skills
- Self-confidence
- Courage to bring about change

Graduation 2017/2018





Scan this nametag on Instagram to follow **glephum**.



Mariam Shokralla: I post weekly on Facebook about my experiences during the master's program and my life in Maastricht. I am happy to answer your questions about the program and about (student) life in Maastricht.

Connect with me
<https://www.facebook.com/MasterChallengeMariam/>

Questions?

kasia.Czabanowska
@maastrichtuniversity.nl



**Good luck with your
study selection**
and see you in Maastricht!