



# Welcome to our Master's Open day!

**School of Business and Economics**

**We will start this presentation with  
Q&A in a few minutes.**

**MSc IB Supply Chain Management**

## Ground Rules

- Please mute yourself while others are talking to avoid echo's.
- Please switch on your camera. We want to make this as “normal” as possible while seeing each other.
- Please silence the alerts on your PC: Outlook, Mail or What’s app notifications will otherwise be heard by everyone.
- If you have a question while we talk, feel free to put it in the chat.



# MSc IB Supply Chain Management

Maastricht University, School of Business and Economics

*Creating value through the supply chain*

# Dr. Robert Suurmond

*Assistant Professor of Purchasing and Supply  
Chain Management*

*Program Leader MSc. IB, track Supply Chain  
Management*

[r.suurmond@maastrichtuniversity.nl](mailto:r.suurmond@maastrichtuniversity.nl)

@RobertSuurmond





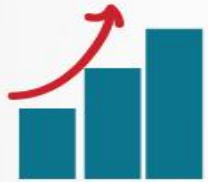


MANAGEMENT

ANALYSIS



LOGISTICS



PROFIT

# SCM

SUPPLY CHAIN  
MANAGEMENT



TIME TO  
MARKET



PROCUREMENT

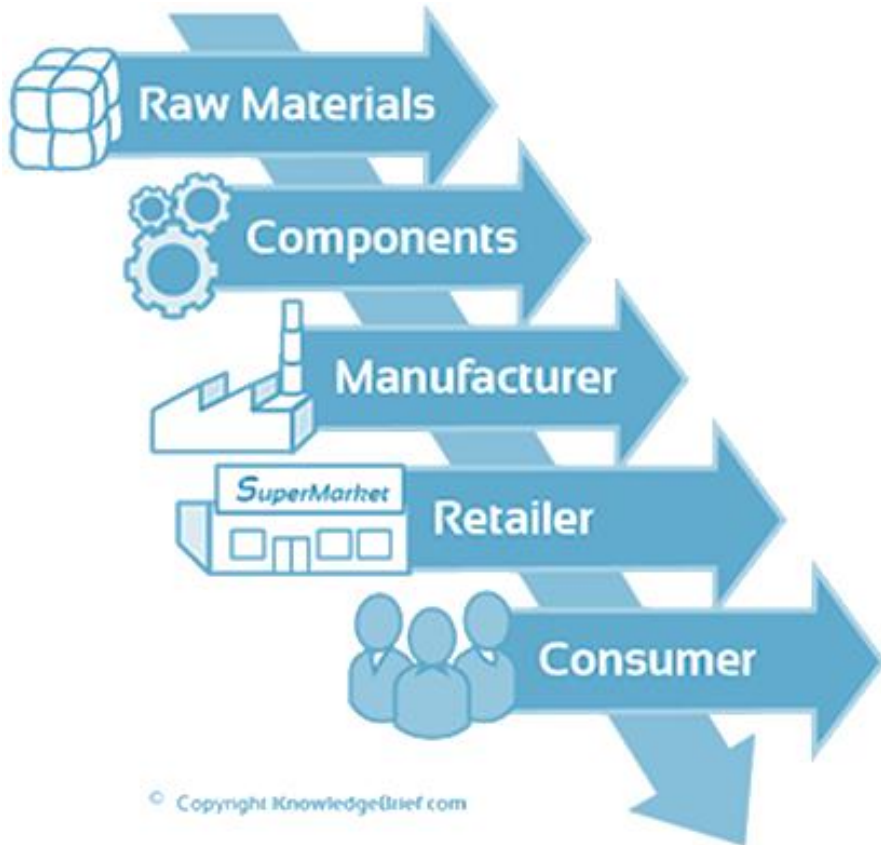


DISTRIBUTION



PLAN

# Programme Overview (Februari)



Block		
4	Strategic Sourcing	Data Analytics
5	Int. Contracting & Relationships	Elective
6	Skills: Thesis	
1	Strategies & Technologies in SC	Writing the Master's Thesis
2	SC Operations Management	
3	Completing the Master's Thesis	

# Thesis Skills & Master Thesis

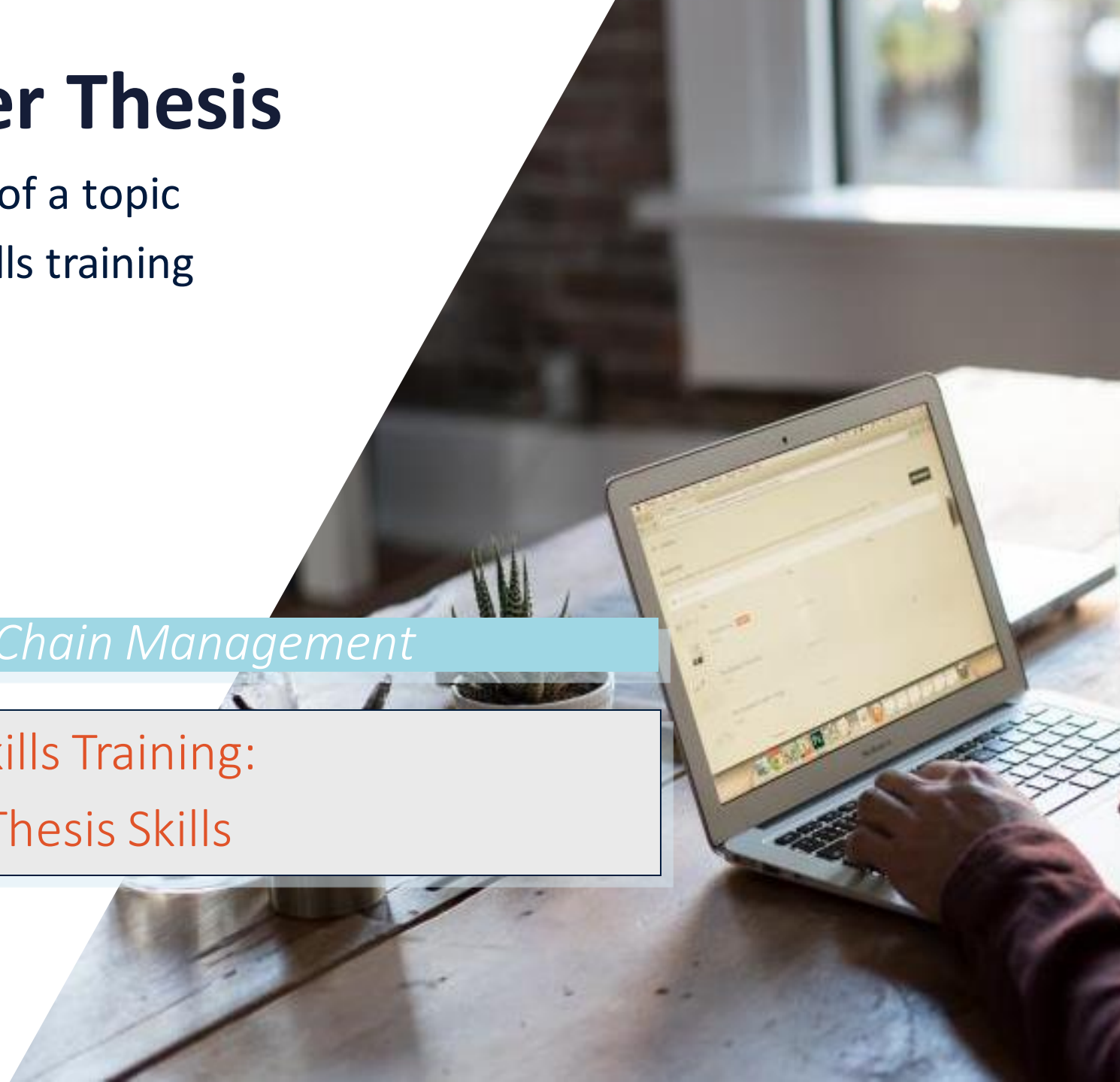
- Acquire a deeper understanding of a topic
- Supported by 'floating' thesis skills training
  1. Thesis Internship Program
  2. Supervisor's suggested topic
  3. Own idea

*Block*

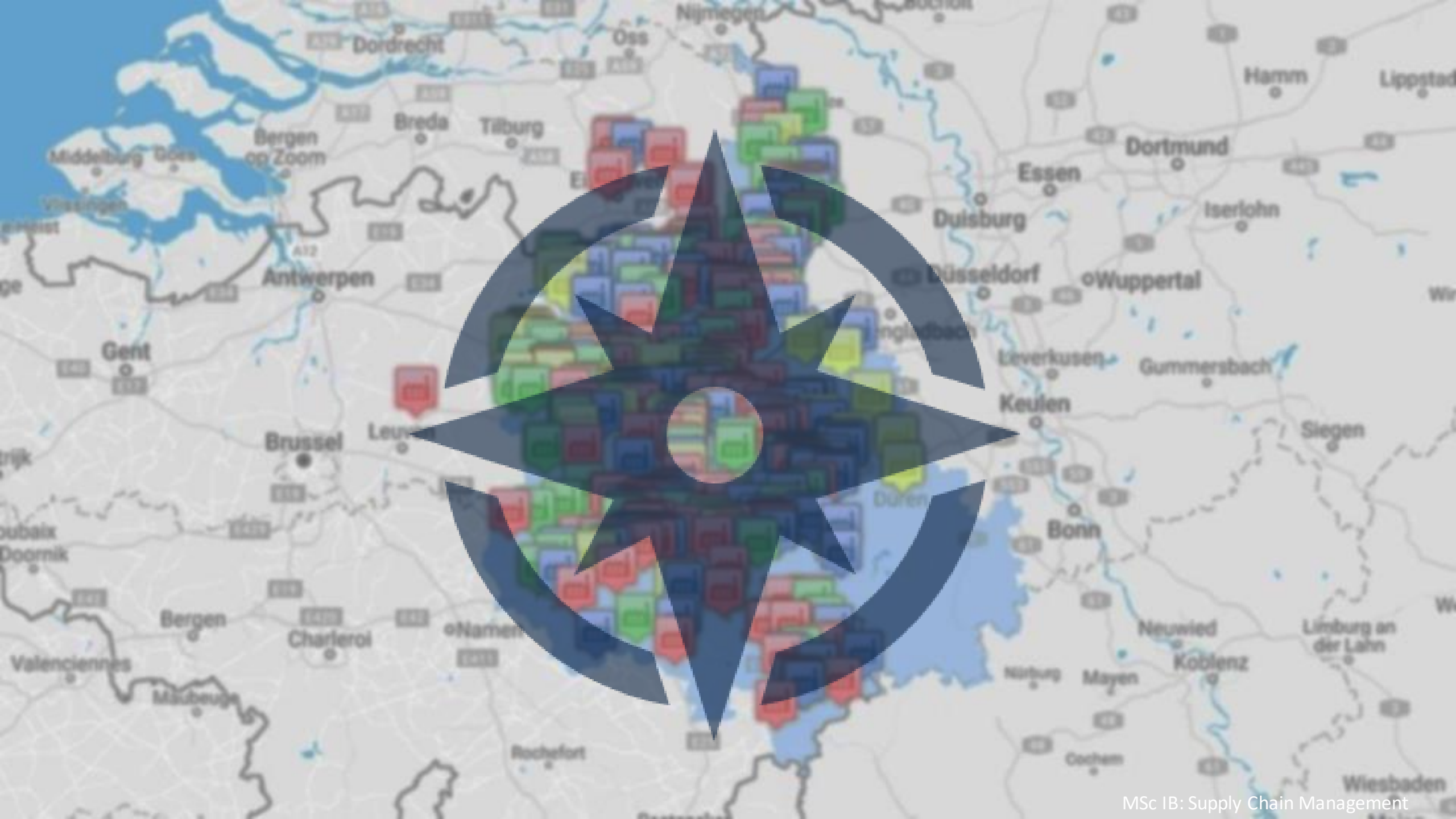
*IB/Supply Chain Management*

3

Skills Training:  
Thesis Skills







## Admissions

### GMAT

- >550 Admissible
- >650 Admitted

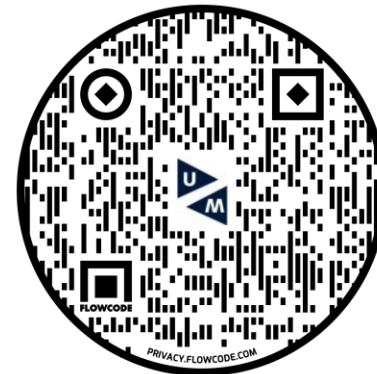
### BSc in Business

- SBE directly admissible
- OR: Admissions Board

### BA or HBO/Applied Science degree

- Usually Premaster required
- Admissions Board

More info:



# Education at Maastricht

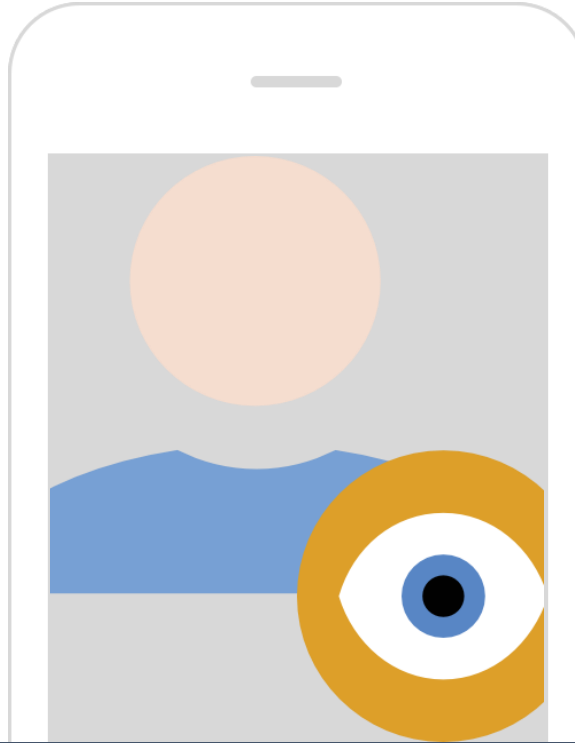
- ✓ PBL Tutorials (90%)
- ✓ Embedded in Practice
- ✓ Academic Interests
- ✓ Steep and Interactive Learning



- 30% SBE Bachelor



- 70% International Students




- 50% Female Students



- 30% Outside Europe

# Student Profile



"The articles gave us insight on current topics and these topics were linked very effectively in the tutorials (in ways I would not have realized on my own)."

"Integrating real-life cases and interaction with companies is critical for understanding how firms work with each other."

"I believe that how and where firms buy their products and services has a large impact on firm performance."

"One has to understand how supply networks work to become successful in business."

"Data analysis is necessary to support decisions in a supply chain."



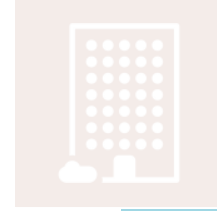
# Graduates

- 235 graduates in 5 years
- Employed in >19 countries



# Function

- Supply Chain Coordinator
- Planner
- Trainee
- Consultant
- Project Manager



# Companies



**MARS**  
**DHL CONSULTING**  
**arvato**  
BERTELSMANN  
Supply Chain Solutions  
DAIMLER  
BRIDGESTONE  
Unilever

Go the **extra** mile

"It's not the  
**organizations**  
that are competing.

Go  
the extra  
mile 

It's the  
**Supply**  
**Chains**  
that are competing."



-Wael Safwat, SCMAO

# *Questions?*



# QUESTIONS: Wooclap 1

**Programme /  
Course**

**Education &  
Tutorials**

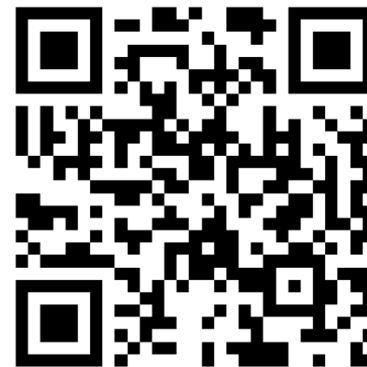
**Thesis /  
TIP**

**Jobs, Profile,  
Future**

**Student  
Life**

Please enter your question(s) at: [wooclap.com/OPENSCM1](https://wooclap.com/OPENSCM1)

Code: **OPENSCM1**



## QUESTIONS: Wooclap 2

**Programme /  
Course**

**Education &  
Tutorials**

**Thesis /  
TIP**

**Jobs, Profile,  
Future**

**Student  
Life**

Please enter your question(s) at: [wooclap.com/OPENSCM2](https://wooclap.com/OPENSCM2)

Code: **OPENSCM2**



# MSc IB Supply Chain Management

Closing



## Back-up slides

[Supply Chain Strategies & Technologies](#)

[Data Analytics](#)

[SC Operations Management](#)

[Elective](#)

[Thesis Skill & Thesis](#)

[Strategic Sourcing](#)

[Int Contracting & Relationships](#)

1<sup>st</sup>  
Semester

<i>Block</i>	<i>IB/Supply Chain Management</i>	
1	Supply Chain Strategies & Technologies	Data Analytics
2	Supply Chain Operations Management	Elective
3	Skills Training: Thesis Skills	

2<sup>nd</sup>  
Semester

<i>Block</i>	<i>IB/Supply Chain Management</i>	
4	Strategic Sourcing	Writing the Master's Thesis
5	International Contracting and Relationships	
6	Completing the Master's Thesis	



Courses



# Supply Chain Strategies & Technologies

- Get introduced to the discipline and the programme
- Take a holistic view of the supply chain
- Take a strategic view of the supply chain

*Block*

*IB/Supply Chain Management*

1

Supply Chain  
Strategies &  
Technologies





# Data Analytics

- Quantitative Methods for problem-solving and research in SCM
- Multiple Regression, Linear Programming, Structural Equation Modelling
- Programming Language R

*Block*

*IB/Supply Chain Management*

1

Data Analytics



# Supply Chain Operations Management

- Design and assess efficient product processes
- Use quantitative models for decision-making

*Block*

*IB/Supply Chain Management*

2

Supply Chain  
Operations



# Elective

- Choose your own course from a wide range of options
- From another MSc IB Program
- Broaden your horizon and go the extra mile

*Block*

*IB/Supply Chain Management*

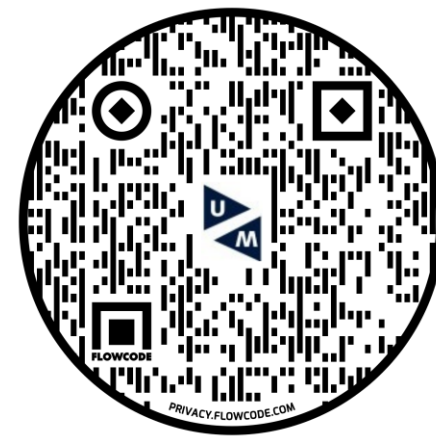
2

Elective



# List of electives

Business Innovation and Sustainable Development	Financial Product Development: A Marketing-Finance Approach
Business Intelligence Case Studies	Financial Statement Analysis and Valuation
Cases in Management Information Systems	Institutional Investors
Consumer Psychology	International Competitive Analysis and Strategy
Corporate Finance	Managers @ Work
Digital Marketing	Multidisciplinary Business Challenge
Entrepreneurial Finance	Organisational Learning
Performance Management and Strategy Execution	Real Estate Finance
Risk, Control and Compliance	



# Strategic Sourcing

- Understand the strategic relevance of purchasing
- Learn about suppliers and competitive advantage
- Organise the purchasing function

*Block*

*IB/Supply Chain Management*

4

Strategic Sourcing



# International Contracting & Relationships

- Understand and manage transactions in global supply chains
- Negotiation, trading, supply risk and disruption
- Multiple levels: country, industry, organization

*Block*

*IB/Supply Chain Management*

5

Int. Contracting & Relationships



6

## Completing the Master's Thesis

