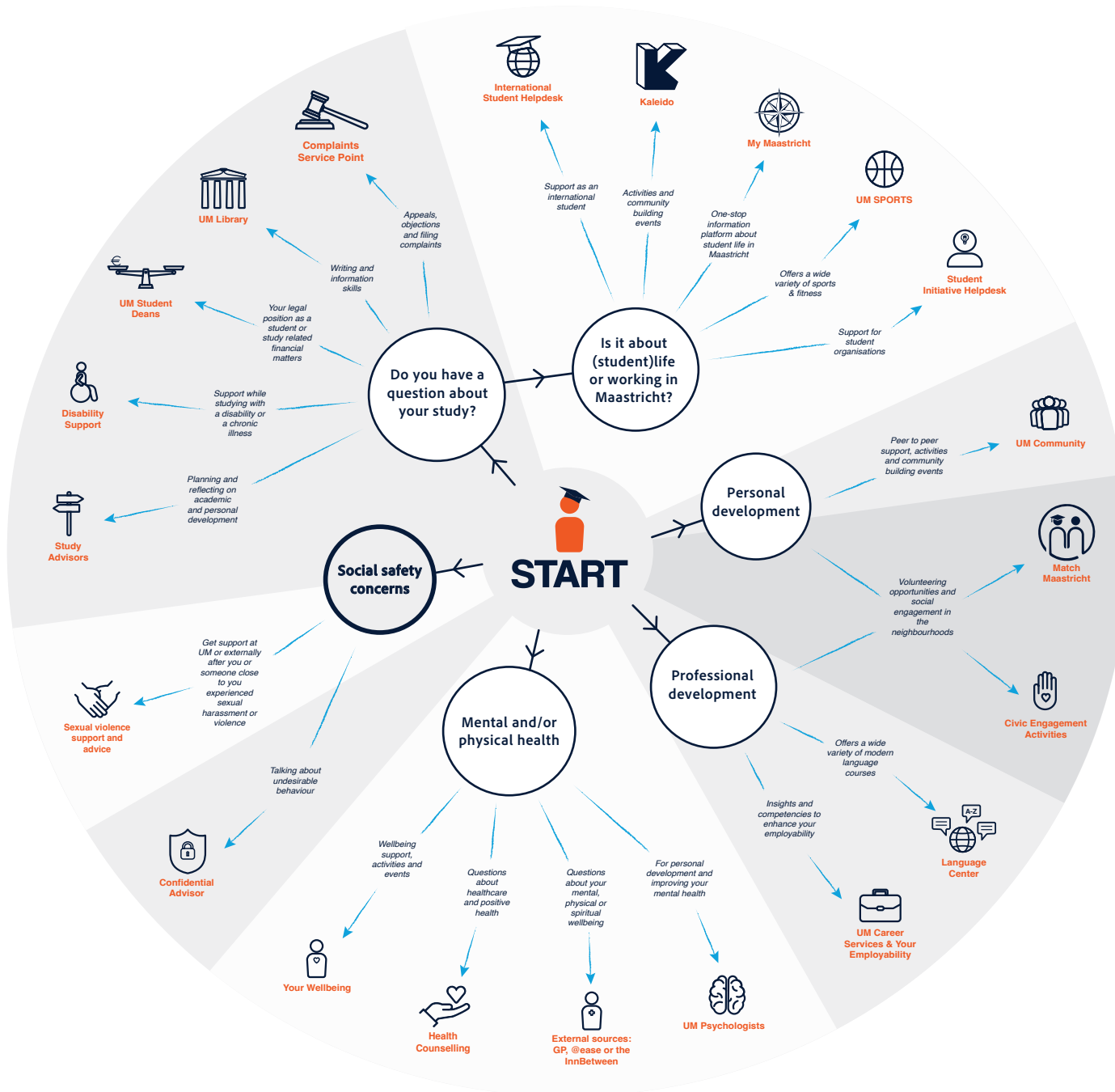


# How to navigate Maastricht University



In case of an emergency, call the emergency helpline: 112

Suicide prevention: [www.113.nl](http://www.113.nl) or 0800-0113

Note to international students: Please make sure you are registered at a GP office and check if you have health insurance. To see if you need medical assistance make sure to first check out [moetiknaardedokter.nl/en](http://moetiknaardedokter.nl/en)



**Maastricht University**